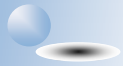


DEN 2006 Annual Noise Report

January 31, 2007

Denver International Airport Noise Office



Inside this issue:

ANOMS System	2
Hotline Policy	3
NEPS and RMT Map	4
2006 Annual Contour Map	6
2006 Annual NEPS Table	7
2006 Complaint and Operational Statistics	8-9
2006 RWY Utilization	10
1st through 4th Quarter Contour Maps and NEPS Tables	12-19

Special points of interest:

- One NEPS violation, page 7.
- Operations are up, page 8.
- Complaints are down, page 8.
- Complaint map, page 9.

2006 In Review

The number of potential Class II NEPS violations registered during 2006 is one. During 2005, there was one potential Class II NEPS violation. Please see page seven for DEN NEPS information.

There was no potential 65 DNL noise contour violation for the quarter. The 65 DNL contour continued to be completely contained within the boundaries of the City and County of Denver. Please see page six for DEN contour map.

There were 66% fewer noise complaints received in 2006, as compared to 2005 (713 vs. 2,129 in 2005). The number of households registering at least one complaint increased by 1% (145 vs. 142 in 2005). Five households registered a combined 36% of total complaints. The percentage of complaints received during Nighttime Aircraft Operations (10:00pm to 7:00am) for 2006 was 15% of all complaints received for 2006. Please see pages eight and nine for complete complaint and operational data.

Snow @ DEN



DEN Airport Noise and Operations System

The DEN Airport Noise and Operations Monitoring System (ANOMS) is a state-of-the-art computer system designed to enable the City and County of Denver to monitor aircraft noise in the vicinity of the airport. In addition to monitoring noise levels, the system calculates Noise Exposure Performance Standards (NEPS) at 101 grid points in Adams County (see map on page 4 for NEPS locations).

The DEN ANOMS system monitors noise levels at 27 permanent and 4 portable noise monitoring terminals. These terminals are located throughout the Denver metro area (see map on page 4 for RMT locations).

The system also records the movement of all aircraft in the vicinity of DEN by utilizing FAA air traffic control radar data. This makes it possible to match actual flights with noise events.

In addition, the ANOMS system records weather information from three remote stations, which include a RACAL recording device to record pilot/controller radio transmissions.



Remote Monitoring Terminal (RMT) with a weather collecting station.

ARTSMAP

ARTSMAP is a specially designed noise modeling program that automatically creates noise contours. ARTSMAP is designed to create contours from actual radar flight tracks that our office receives from the FAA ARTS system which is sent via modem, eliminating the need for manual data manipulation. The ARTSMAP software is installed on a computer in the Noise Abatement Office. The program analyzes, views, reports, and stores the data. Currently, ARTSMAP is used at several major airports nationally. It allows the DEN Noise Abatement Office to perform noise data analysis, generate daily automated noise contours, receive detailed runway utilization, and airline fleet mix identification.

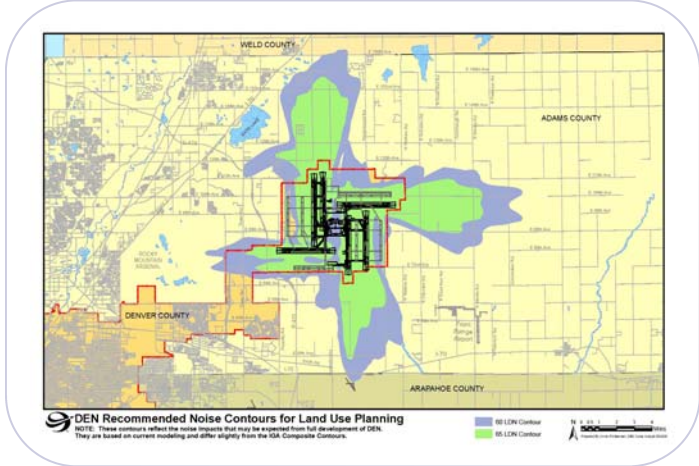


DEN's Terminal tent roof view from the South.

Land Use and Zoning

Urban growth and development in the areas surrounding DEN, particularly non-compatible residential and other noise-sensitive land uses, is of utmost concern to the City and County of Denver. The Noise Office has developed noise contours surrounding the airport, inside which certain types of land uses are not recommended. The 65 Ldn noise contour (average decibel level with a 10 decibel penalty applied to nighttime operations) is a line inside which, under Federal guidelines, no residential development should occur.

The operational 65 Ldn noise contour for the airport, as created by ARTSMAP, is included in this report. However, for DEN, the 60 Ldn noise contour is used for compatible land use planning by the surrounding jurisdictions, in accordance with guidelines promulgated by the Denver Regional Council of Governments and the Denver/Adams County Intergovernmental Agreement. Additional mapping for DEN that includes the applicable noise contours is available upon request.



DEN Noise Hotline Policy

The purpose of the DEN Noise Complaint Hotline is to provide an opportunity for individuals to express their concerns regarding noise generated by aircraft operating at DEN. Citizens are asked to leave their name, address and the date and time of their complaint on the hotline. Complaints are downloaded daily by our Noise Analysts and then transcribed into the ANOMS system, where specific complaints can be matched to individual flight tracks. It is essential for all information to be entered correctly in order for the system to be effective.

Profanity will not be tolerated, and will result in the complaint not being registered. Any attempt to deliberately tie-up or abuse the Hotline may result in police action. Phone harassment is a state criminal offense and can carry a jail sentence and/or fine. Threats involving aircraft and/or the airport are a very serious matter and are a federal criminal offense. To make a threat, even jokingly, will result in a notification to the Denver Police Department and may involve an FBI investigation.



Glossary Of Terms

Sound: A rapid variation in air pressure, which is perceived by the ear and brain as sound.

Noise: Generally considered to be any sound, which is deemed undesirable by an individual.

Decibel: Sound is measured by its pressure or energy in terms of decibels. The decibel scale is logarithmic; when the decibel level increases by 6 dB, the measured sound is twice as loud.

Noise Abatement: A measure or action that minimizes the amount or impact of noise on the environs of an airport. Noise abatement measures include aircraft operating procedures and use or disuse of certain runways or flight tracks. These operating procedures are controlled by the FAA.

A-Weighted Sound Level (dBA): A type of sound level measurement which reduces the effect of very high and very low frequencies in order to mimic the response of the human ear. Nearly all aircraft sound level measurement is conducted using A-weighting.

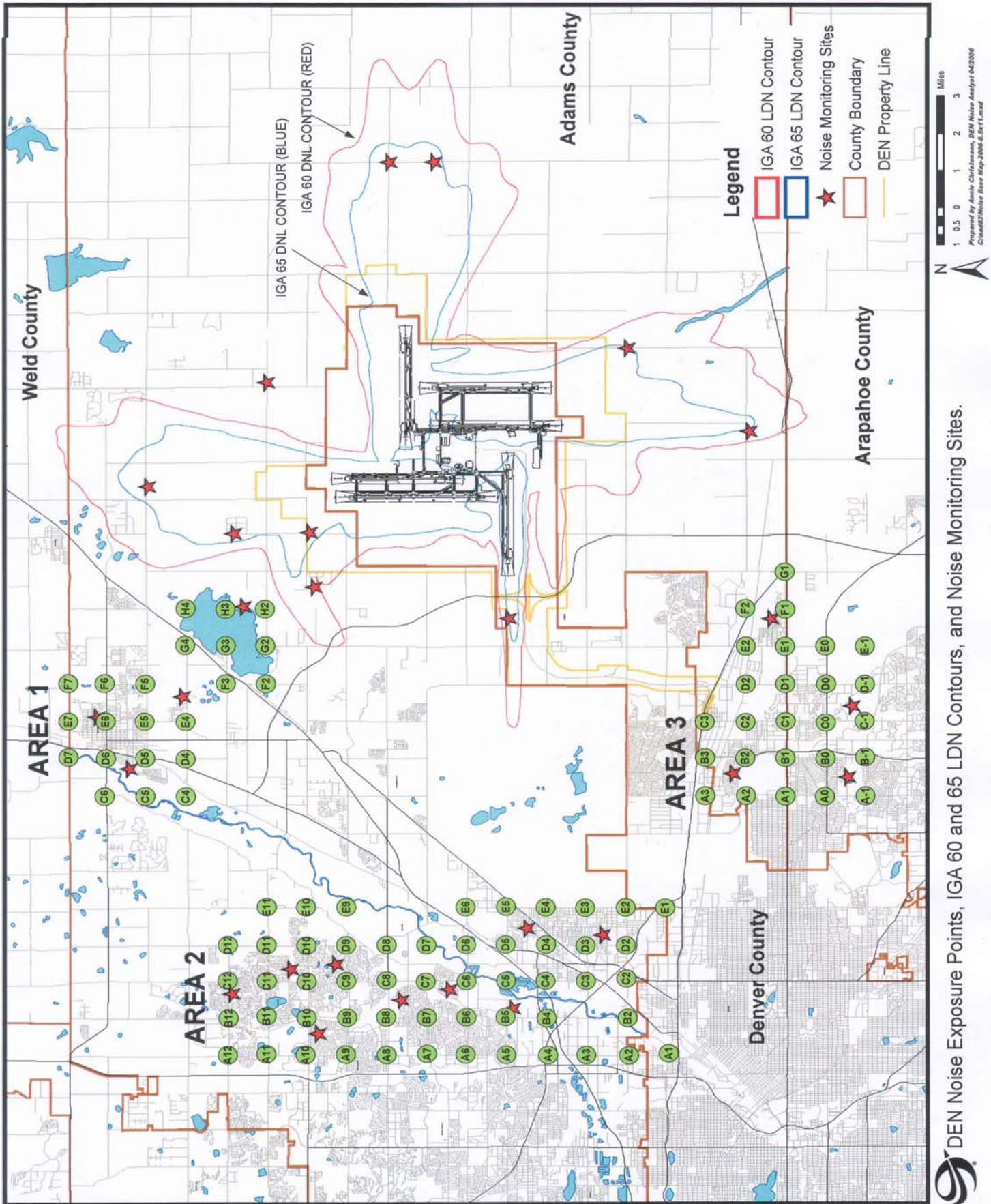
Equivalent Continuous Sound Level (Leq): A measurement of the average sound energy experienced over a period of time. This average sound level is expressed in decibels, and includes a notation of the period of time, which it covers (such as Leq (24) for an average of the sound level over a 24-hour period).

Day Night Level (Ldn): Also referred to as DNL. Similar to a Leq measurement, but is conducted over at least a 24-hour time span and includes a 10dB nighttime penalty. For an Ldn calculation, all noise that occurs at night (defined as 10:00 pm to 7:00 am) is artificially increased for the public's increased sensitivity to noise during these hours.

Noise Contour: A line surrounding an airport that encloses a geographic region, which is exposed to a particular Ldn level. These contour lines are nested in such a way that contours closer to the airport generally surround areas that experience higher noise levels than contours farther out. Annual Ldn contours are used to determine whether certain types of zoning or land uses are compatible with particular annual Ldn noise levels. 65 Ldn is considered by many federal agencies to be the level at which residential land use becomes incompatible.

Remote Monitoring Terminal (RMT): Consists of a noise level analyzer, a weatherproof microphone, a system controller, a power supply, and a dedicated telephone line to download noise data to the ANOMS system, all mounted in a weatherproof cabinet.

Noise Exposure Performance Standards (NEPS) Grid Coordinates, IGA Contour, and Remote Monitoring Terminal (RMT) Locations

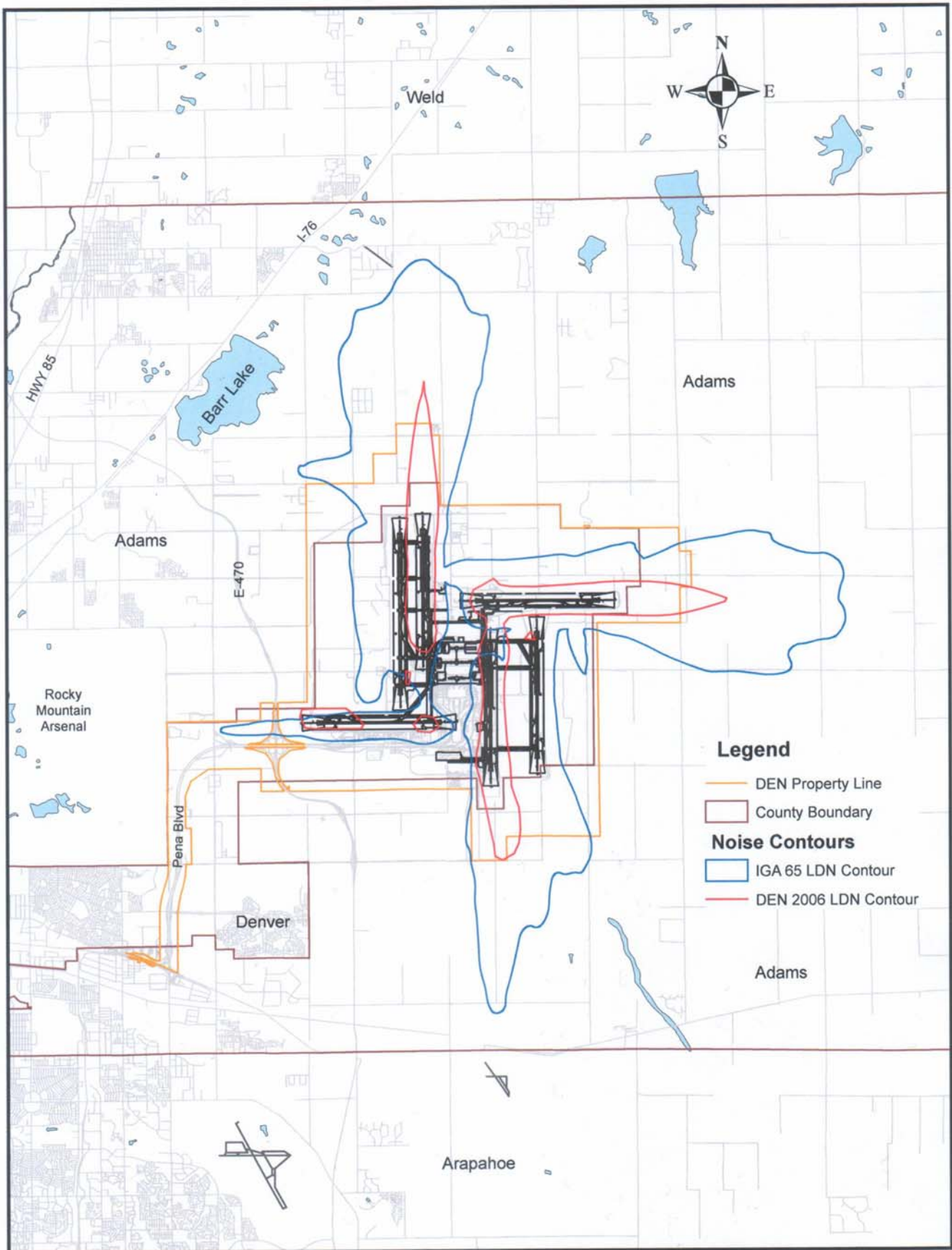


2006 Annual Contour and NEPS

January 1, 2006 through December 31, 2006

Please Note: Report does not include the impact of extraordinary weather to the NEPS values.

2006 Annual — DEN 65 LDN Contour



 DEN 2006 65 LDN Contour

0 0.5 1 2 3 4 Miles

2006 Annual — Denver/Adams County IGA NEPS Values

Area 2 2006			
Grid Points	IGA Annual Leq (24)	Calculated Leq (24)	Difference Leq
A,1	38.6	36.6	-2.0
A,2	37.6	37.3	-0.4
A,3	42.3	38.5	-3.8
A,4	45.3	39.8	-5.5
A,5	43.9	40.6	-3.3
A,6	37.5	38.9	1.4
A,7	37.7	37.2	-0.6
A,8	36.5	35.9	-0.6
A,9	36.3	35.4	-0.9
A,10	37.6	35.3	-2.3
A,11	39.2	34.7	-4.5
A,12	41.2	33.7	-7.5
B,2	39.5	37.7	-1.8
B,4	42.5	40.4	-2.1
B,5	43.1	41.5	-1.6
B,6	39.0	39.5	0.5
B,7	39.0	37.5	-1.5
B,8	38.0	36.4	-1.7
B,9	38.3	36.5	-1.8
B,10	39.0	36.6	-2.4
B,11	40.4	35.8	-4.6
B,12	42.6	34.8	-7.8
C,2	41.0	38.4	-2.6
C,3	43.3	39.1	-4.2
C,4	43.5	41.1	-2.4
C,5	43.4	42.5	-0.9
C,6	43.3	40.1	-3.2
C,7	43.3	37.8	-5.5
C,8	42.6	37.0	-5.6
C,9	42.2	37.8	-4.4
C,10	41.6	37.6	-4.0
C,11	42.5	36.5	-6.0
C,12	44.3	35.2	-9.1
D,2	41.7	39.3	-2.4
D,3	46.2	39.7	-6.6
D,4	48.4	41.7	-6.7
D,5	48.2	43.7	-4.5
D,6	46.2	40.7	-5.5
D,7	44.2	38.2	-6.1
D,8	43.7	38.1	-5.6
D,9	43.1	39.0	-4.1
D,10	44.9	38.0	-6.9
D,11	44.5	36.4	-8.1
D,12	45.1	34.8	-10.3
E,1	42.4	38.9	-3.5
E,2	42.2	40.4	-1.8
E,3	46.7	40.4	-6.3
E,4	51.2	42.4	-8.8
E,5	51.0	45.1	-5.9
E,6	44.6	41.4	-3.2
E,9	43.1	39.8	-3.3
E,10	43.1	38.0	-5.1
E,11	46.1	36.1	-10.0

Area 1 2006			
Grid Points	IGA Annual Leq (24)	Calculated Leq (24)	Difference Leq
C,4	44.2	35.4	-8.8
C,5	36.7	33.7	-3.0
C,6	36.0	33.2	-2.8
D,4	41.1	34.8	-6.3
D,5	34.2	34.3	0.1
D,6	36.0	34.4	-1.7
D,7	41.4	35.1	-6.3
E,4	38.3	34.7	-3.6
E,5	34.8	35.0	0.2
E,6	36.7	34.4	-2.3
E,7	41.4	34.7	-6.7
F,2	51.7	39.2	-12.6
F,3	43.7	35.7	-8.1
F,5	37.3	33.5	-3.8
F,6	38.5	33.7	-4.8
F,7	42.1	34.3	-7.8
G,2	51.2	40.4	-10.8
G,3	42.1	36.3	-5.8
G,4	40.2	34.4	-5.9
H,2	50.1	42.0	-8.2
H,3	46.0	37.0	-9.0
H,4	46.1	35.5	-10.7

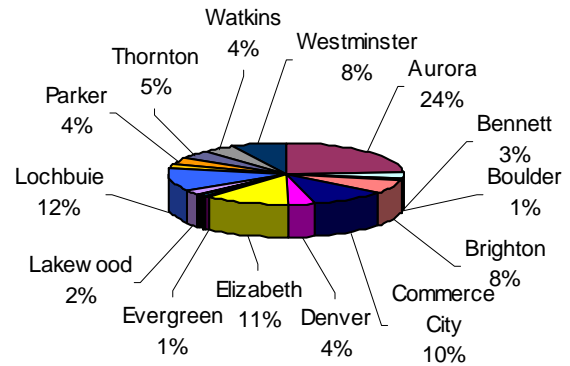
Area 3 2006			
Grid Points	IGA Annual Leq (24)	Calculated Leq (24)	Difference Leq
A,-1	38.9	32.6	-6.3
A,0	39.6	32.4	-7.2
A,1	43.2	33.0	-10.2
A,2	45.7	34.0	-11.7
A,3	45.6	35.6	-10.0
B,-1	37.9	32.3	-5.6
B,0	39.2	32.4	-6.8
B,1	42.6	32.7	-9.9
B,2	45.8	33.6	-12.2
B,3	45.7	35.0	-10.7
C,-1	36.7	32.9	-3.8
C,0	37.1	32.9	-4.2
C,1	39.5	33.2	-6.3
C,2	44.8	33.6	-11.2
C,3	46.5	34.7	-11.8
D,-1	32.6	33.7	1.1
D,0	33.3	33.3	0.0
D,1	37.3	33.2	-4.1
D,2	43.0	33.6	-9.4
E,-1	31.4	33.7	2.3
E,0	33.1	32.8	-0.3
E,1	36.2	32.5	-3.7
E,2	40.6	32.9	-7.7
F,1	36.5	32.8	-3.7
F,2	39.4	33.1	-6.3
G,1	42.5	33.5	-9.0

2006 Annual — DEN Complaint and Operational Statistics

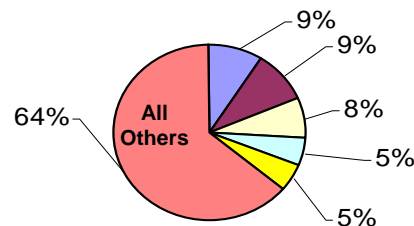
2006 Annual Noise Complaint Calls by Community *

Community*	No. of Calls 2006	No. of Callers 2006	No. of Calls 2005	No. of Calls 2004
Arvada	1	1	16	1
Aurora	207	20	399	540
Bailey	0	0	0	1
Bennett	11	1	19	6
Boulder	12	2	54	115
Brighton	50	15	335	226
Broomfield	0	0	0	1
Castle Rock	0	0	2	1
Commerce City	95	19	230	258
Denver	26	13	39	53
Elizabeth	81	9	500	495
Englewood	1	1	0	0
Evergreen	7	2	59	151
Fort Collins	0	0	0	28
Fort Lupton	3	2	0	1
Golden	4	3	12	4
Henderson	6	2	2	14
Highlands Ranch	0	0	1	1
Hudson	2	2	2	8
Kiowa	1	1	1	0
Lafayette	1	1	0	0
Lakewood	25	1	47	120
Littleton	0	0	0	1
Lochbuie	43	6	0	0
Louviers	0	0	0	1
Nederland	0	0	0	4
Northglenn	11	6	28	16
Parker	25	15	54	161
Thornton	28	16	203	473
Watkins	29	5	27	27
Westminster	44	2	97	151
Wheatridge	0	0	2	1
Overall Total	713	145	2,129	2,859

Total Calls for 2006 by Community*



Top Five Complainants Vs. All Others

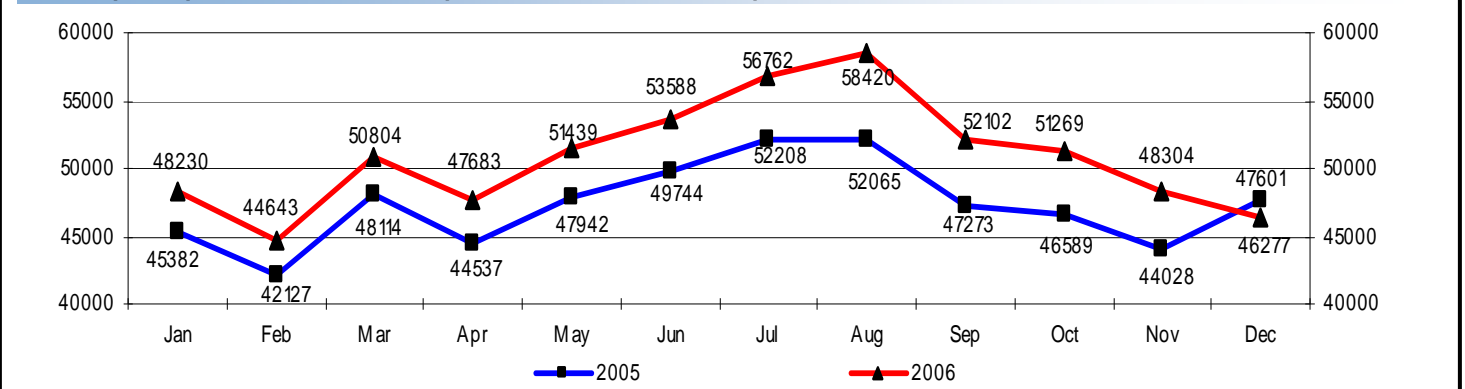


* See map on next page for location of known noise complaints for 2006.

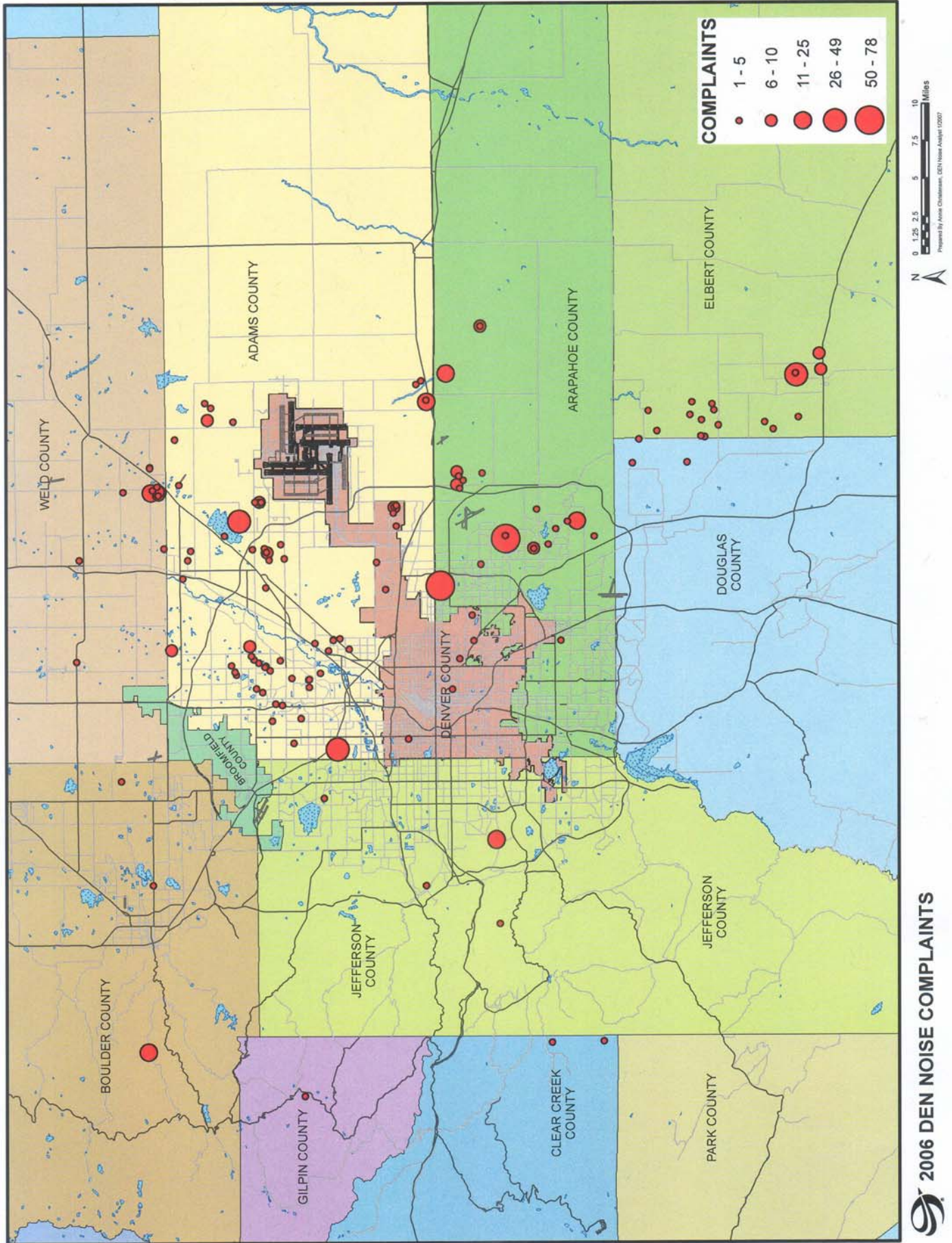
Monthly Comparison: 2006 Noise Complaint Calls - Daytime vs. Nighttime

Time Complaint Received	January	February	March	April	May	June	July	August	September	October	November	December	2006 Total
Day Hours (7:00 am to 9:59 pm)	40	33	41	35	93	78	85	74	54	44	16	14	607
Night Hours (10:00 pm to 6:59 am)	4	4	4	7	12	7	10	26	16	9	4	3	106
Total	44	37	45	42	105	85	95	100	70	53	20	17	713

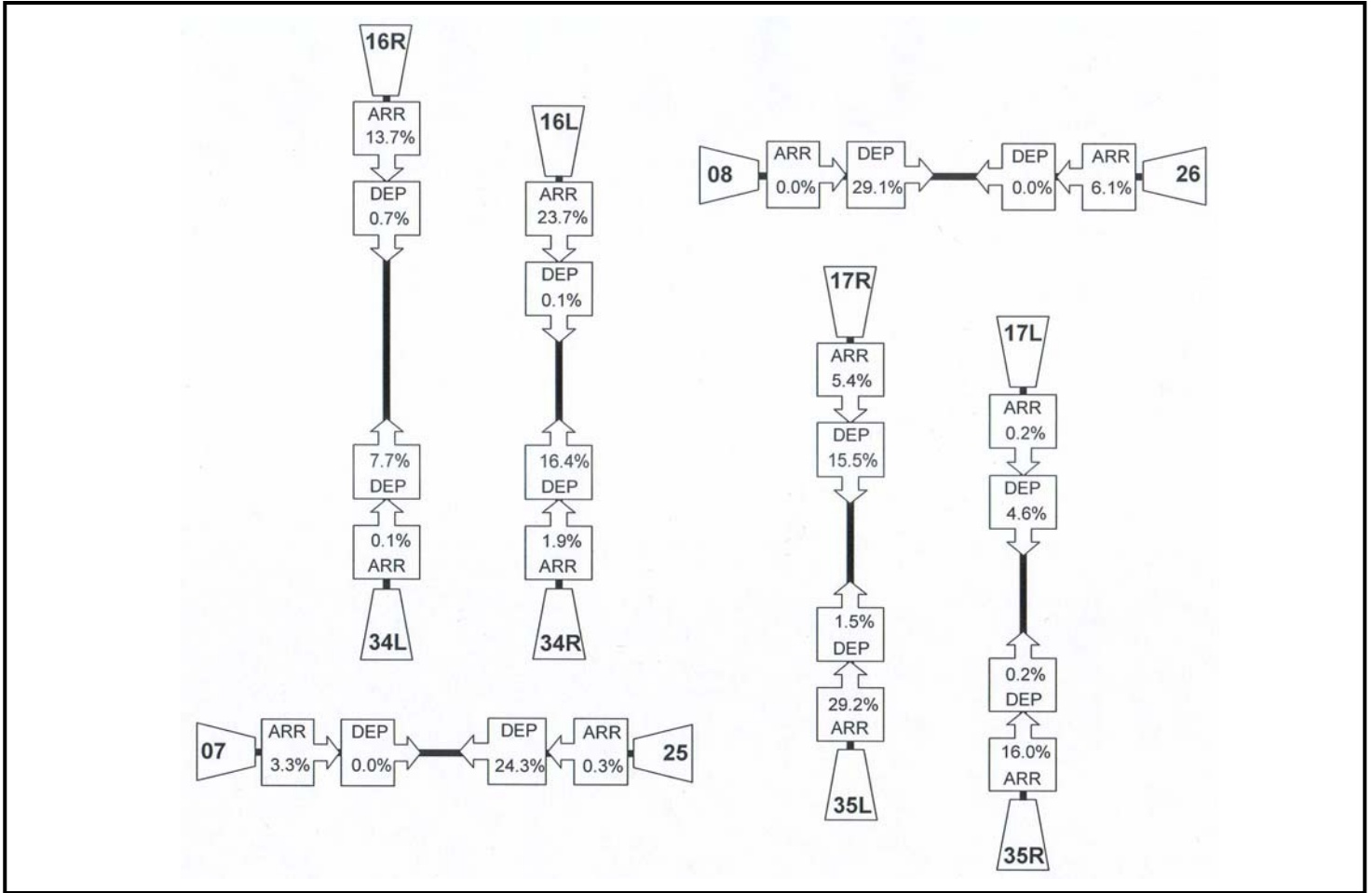
Monthly Comparison: 2005 Total Operations vs. 2006 Total Operations



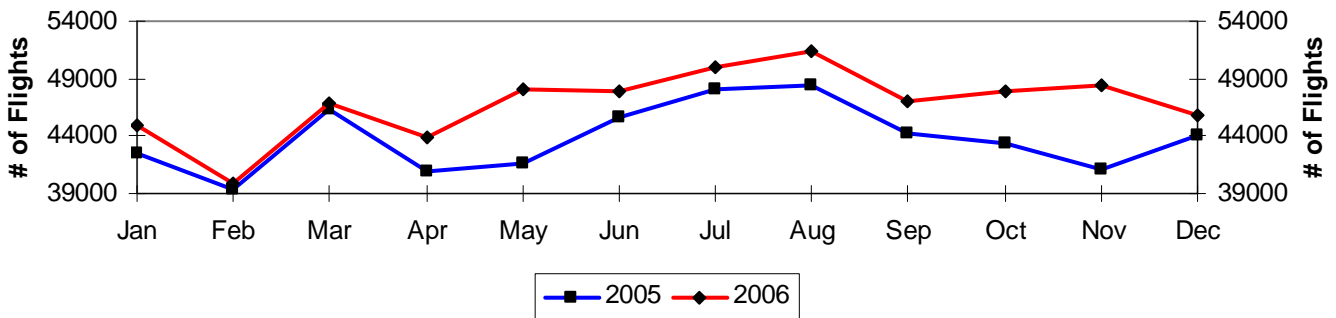
2006 Annual — DEN Complaint and Operational Statistics



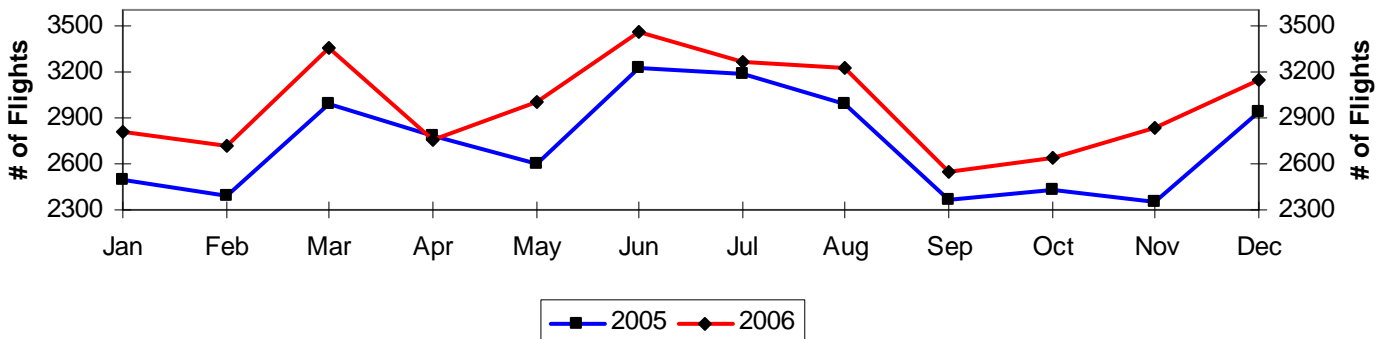
2006 Annual—DEN Runway Utilization



2005 vs. 2006 DEN Daytime Arrivals & Departures



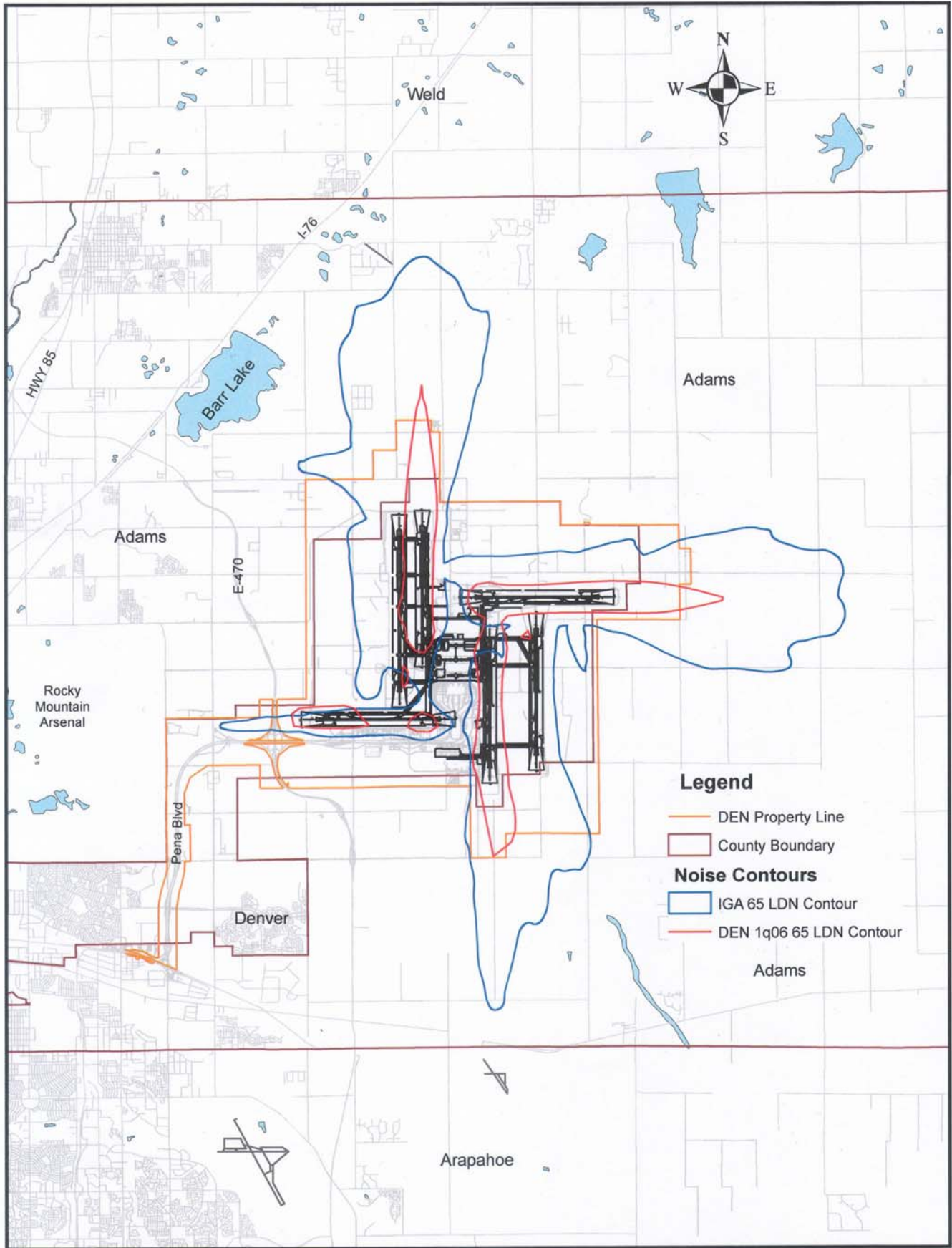
2005 vs 2006 DEN Nighttime Arrivals & Departures



Quarterly Contour Maps and NEPS Tables

- 1Q06: January 1, 2006 through March 31, 2006 (pages 12-13)
- 2Q06: April 1, 2006 through June 30, 2006 (pages 14-15)
- 3Q06: July 1, 2006 through September 30, 2006 (pages 16-17)
- 4Q06: October 1, 2006 through December 31, 2006 (pages 18-19)

1st Quarter 2006 — DEN 65 LDN Contour



 DEN 1Q06 65 LDN Contour

Miles
0 0.5 1 2 3 4

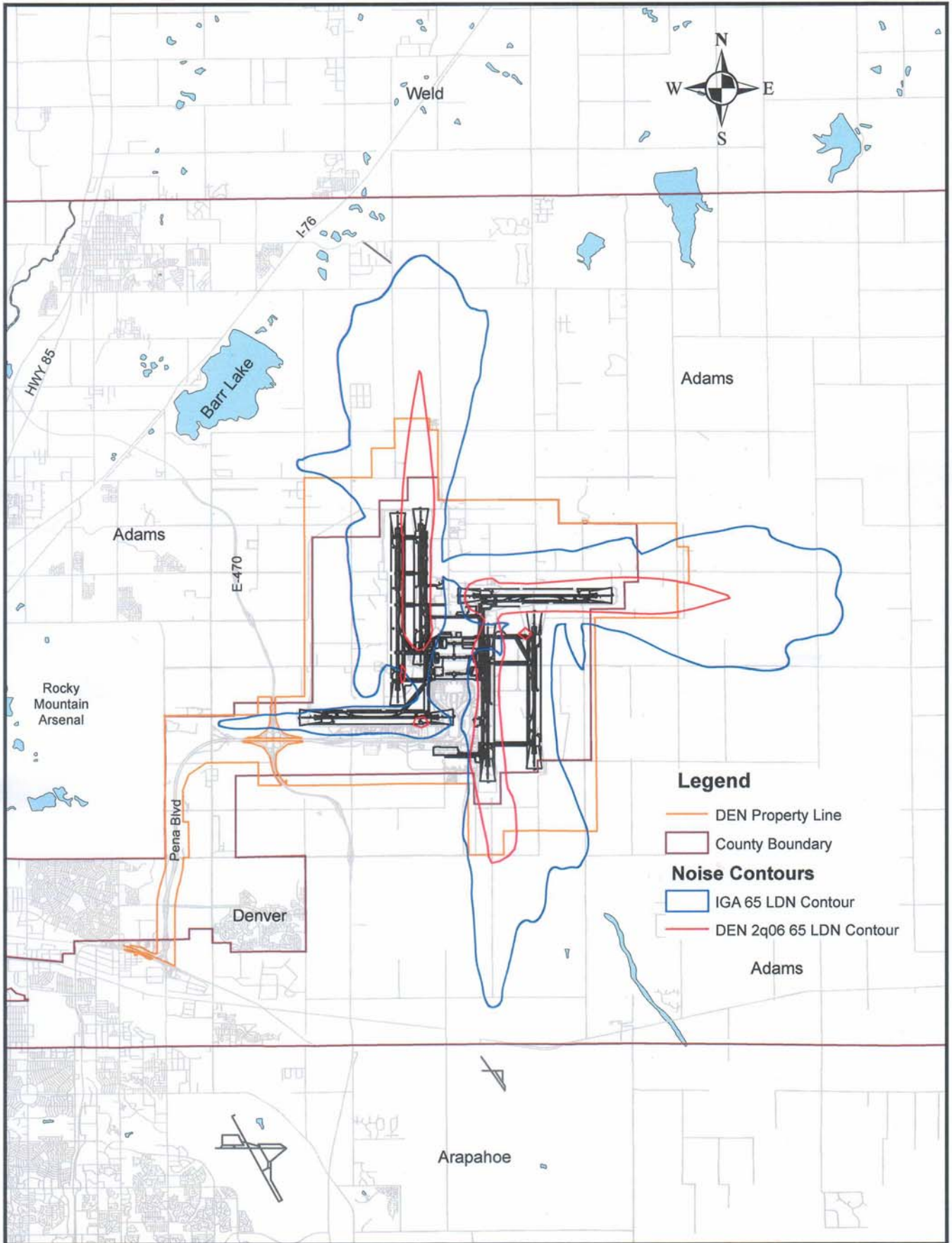
1st Quarter 2006 — Denver/Adams County IGA NEPS Values

Area 2 1Q06			
Grid Points	IGA Annual Leq (24)	Calculated Leq (24)	Difference Leq
A,1	38.6	36.4	-2.2
A,2	37.6	37.2	-0.5
A,3	42.3	38.3	-4.0
A,4	45.3	39.4	-5.9
A,5	43.9	39.8	-4.1
A,6	37.5	38.5	1.0
A,7	37.7	37.3	-0.4
A,8	36.5	36.0	-0.5
A,9	36.3	34.7	-1.6
A,10	37.6	34.2	-3.4
A,11	39.2	33.5	-5.7
A,12	41.2	32.7	-8.5
B,2	39.5	37.6	-1.9
B,4	42.5	40.1	-2.4
B,5	43.1	40.7	-2.5
B,6	39.0	39.1	0.1
B,7	39.0	37.7	-1.3
B,8	38.0	36.3	-1.7
B,9	38.3	35.6	-2.7
B,10	39.0	35.3	-3.7
B,11	40.4	34.8	-5.6
B,12	42.6	33.9	-8.7
C,2	41.0	38.3	-2.7
C,3	43.3	39.1	-4.2
C,4	43.5	40.7	-2.8
C,5	43.4	41.6	-1.8
C,6	43.3	39.8	-3.5
C,7	43.3	38.2	-5.1
C,8	42.6	36.9	-5.7
C,9	42.2	36.7	-5.5
C,10	41.6	36.6	-5.0
C,11	42.5	35.6	-6.9
C,12	44.3	34.4	-9.9
D,2	41.7	39.1	-2.6
D,3	46.2	39.6	-6.6
D,4	48.4	41.4	-7.0
D,5	48.2	42.6	-5.6
D,6	46.2	40.5	-5.8
D,7	44.2	38.6	-5.6
D,8	43.7	37.6	-6.1
D,9	43.1	37.9	-5.2
D,10	44.9	37.2	-7.7
D,11	44.5	35.7	-8.8
D,12	45.1	34.4	-10.8
E,1	42.4	38.9	-3.5
E,2	42.2	40.1	-2.1
E,3	46.7	40.3	-6.4
E,4	51.2	42.2	-9.0
E,5	51.0	43.8	-7.2
E,6	44.6	41.2	-3.4
E,9	43.1	38.8	-4.3
E,10	43.1	37.5	-5.6
E,11	46.1	35.7	-10.4

Area 1 1Q06			
Grid Points	IGA Annual Leq (24)	Calculated Leq (24)	Difference Leq
C,4	44.2	34.8	-9.4
C,5	36.7	33.1	-3.6
C,6	36.0	32.5	-3.5
D,4	41.1	34.6	-6.5
D,5	34.2	34.2	0.0
D,6	36.0	34.2	-1.8
D,7	41.4	35.1	-6.3
E,4	38.3	34.6	-3.7
E,5	34.8	35.1	0.3
E,6	36.7	34.5	-2.2
E,7	41.4	34.8	-6.6
F,2	51.7	38.1	-13.6
F,3	43.7	35.0	-8.7
F,5	37.3	33.5	-3.8
F,6	38.5	33.9	-4.6
F,7	42.1	34.3	-7.8
G,2	51.2	39.1	-12.1
G,3	42.1	35.3	-6.8
G,4	40.2	33.8	-6.4
H,2	50.1	40.4	-9.7
H,3	46.0	36.1	-9.9
H,4	46.1	34.8	-11.3

Area 3 1Q06			
Grid Points	IGA Annual Leq (24)	Calculated Leq (24)	Difference Leq
A,-1	38.9	33.1	-5.8
A,0	39.6	32.8	-6.8
A,1	43.2	33.4	-9.8
A,2	45.7	34.5	-11.2
A,3	45.6	36.1	-9.5
B,-1	37.9	32.5	-5.4
B,0	39.2	32.7	-6.6
B,1	42.6	33.0	-9.7
B,2	45.8	33.9	-11.9
B,3	45.7	35.3	-10.4
C,-1	36.7	32.6	-4.2
C,0	37.1	32.7	-4.4
C,1	39.5	32.8	-6.7
C,2	44.8	33.5	-11.3
C,3	46.5	34.7	-11.8
D,-1	32.6	33.1	0.5
D,0	33.3	33.0	-0.3
D,1	37.3	33.1	-4.3
D,2	43.0	33.3	-9.7
E,-1	31.4	33.1	1.7
E,0	33.1	32.5	-0.6
E,1	36.2	32.6	-3.6
E,2	40.6	32.9	-7.7
F,1	36.5	32.7	-3.8
F,2	39.4	33.5	-5.9
G,1	42.5	34.5	-8.0

2nd Quarter 2006 — DEN 65 LDN Contour



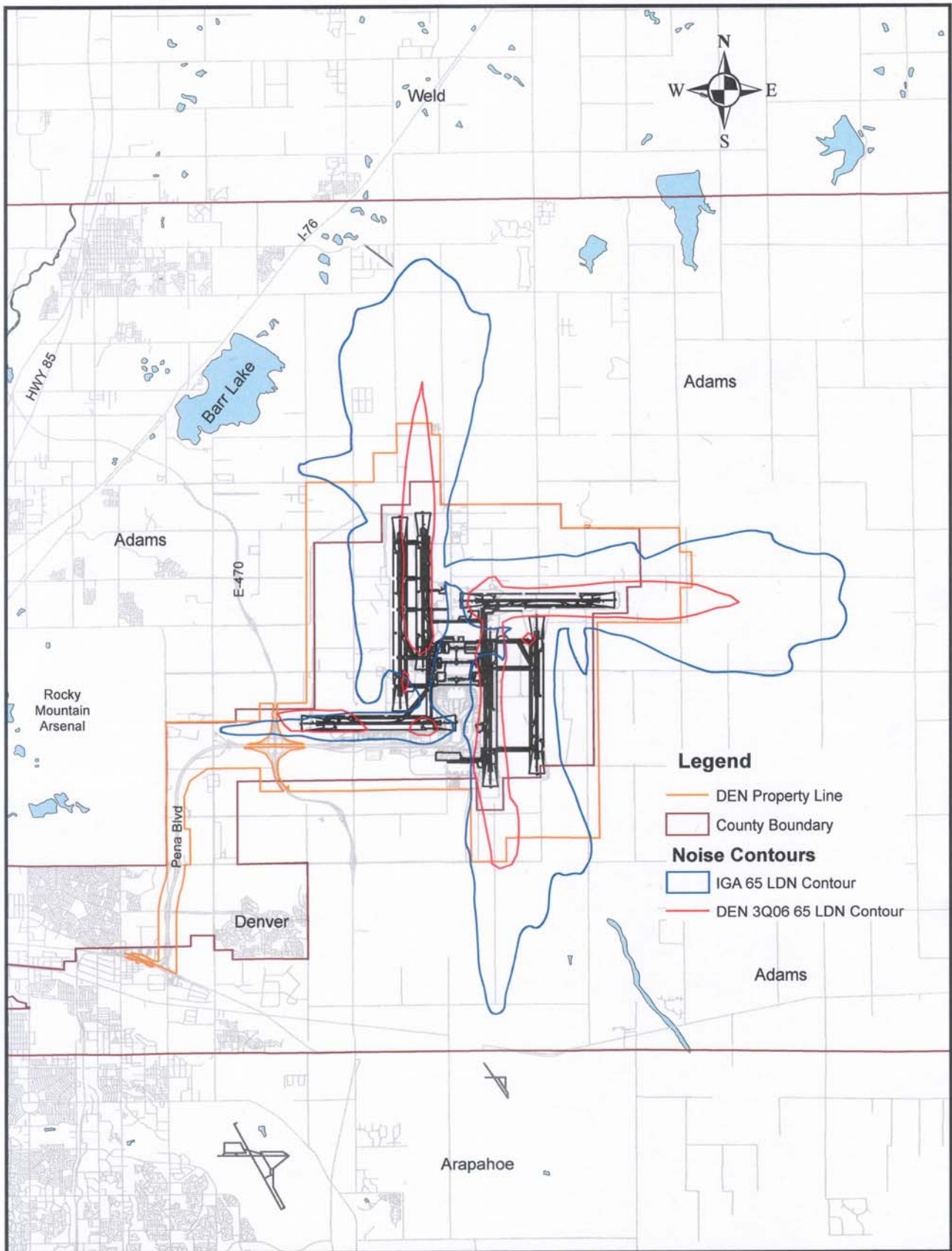
2nd Quarter 2006 — Denver/Adams County IGA NEPS Values

Area 2 2Q06			
Grid Points	IGA Annual Leq (24)	Calculated Leq (24)	Difference Leq
A,1	38.6	36.5	-2.1
A,2	37.6	37.1	-0.5
A,3	42.3	38.1	-4.2
A,4	45.3	39.2	-6.1
A,5	43.9	40.3	-3.6
A,6	37.5	38.9	1.4
A,7	37.7	37.2	-0.5
A,8	36.5	36.3	-0.2
A,9	36.3	36.1	-0.2
A,10	37.6	36.2	-1.4
A,11	39.2	35.5	-3.7
A,12	41.2	34.3	-6.9
B,2	39.5	37.6	-1.9
B,4	42.5	39.8	-2.7
B,5	43.1	41.1	-2.0
B,6	39.0	39.4	0.4
B,7	39.0	37.5	-1.5
B,8	38.0	36.8	-1.2
B,9	38.3	37.1	-1.2
B,10	39.0	37.1	-1.9
B,11	40.4	36.4	-4.0
B,12	42.6	35.2	-7.4
C,2	41.0	38.4	-2.6
C,3	43.3	38.9	-4.4
C,4	43.5	40.5	-3.0
C,5	43.4	42.1	-1.3
C,6	43.3	39.9	-3.4
C,7	43.3	37.7	-5.6
C,8	42.6	37.4	-5.2
C,9	42.2	38.2	-4.0
C,10	41.6	38.1	-3.5
C,11	42.5	37.0	-5.5
C,12	44.3	35.5	-8.8
D,2	41.7	39.4	-2.4
D,3	46.2	39.5	-6.7
D,4	48.4	41.1	-7.3
D,5	48.2	43.3	-5.0
D,6	46.2	40.5	-5.7
D,7	44.2	38.1	-6.1
D,8	43.7	38.4	-5.3
D,9	43.1	39.3	-3.8
D,10	44.9	38.6	-6.3
D,11	44.5	37.1	-7.4
D,12	45.1	35.2	-9.9
E,1	42.4	38.7	-3.7
E,2	42.2	40.6	-1.6
E,3	46.7	40.4	-6.3
E,4	51.2	41.8	-9.4
E,5	51.0	44.6	-6.4
E,6	44.6	41.3	-3.3
E,9	43.1	40.1	-3.0
E,10	43.1	38.7	-4.4
E,11	46.1	37.1	-9.1

Area 1 2Q06			
Grid Points	IGA Annual Leq (24)	Calculated Leq (24)	Difference Leq
C,4	44.2	35.5	-8.7
C,5	36.7	33.8	-2.9
C,6	36.0	33.4	-2.7
D,4	41.1	34.8	-6.3
D,5	34.2	34.1	-0.1
D,6	36.0	34.0	-2.0
D,7	41.4	35.0	-6.4
E,4	38.3	34.8	-3.5
E,5	34.8	34.9	0.1
E,6	36.7	33.8	-2.9
E,7	41.4	34.4	-7.0
F,2	51.7	41.4	-10.3
F,3	43.7	37.1	-6.6
F,5	37.3	33.4	-3.9
F,6	38.5	33.3	-5.2
F,7	42.1	34.2	-7.9
G,2	51.2	42.7	-8.5
G,3	42.1	37.7	-4.4
G,4	40.2	34.4	-5.9
H,2	50.1	44.2	-5.9
H,3	46.0	38.7	-7.4
H,4	46.1	35.3	-10.8

Area 3 2Q06			
Grid Points	IGA Annual Leq (24)	Calculated Leq (24)	Difference Leq
A,-1	38.9	32.4	-6.5
A,0	39.6	32.4	-7.2
A,1	43.2	33.1	-10.1
A,2	45.7	34.2	-11.5
A,3	45.6	35.5	-10.1
B,-1	37.9	32.4	-5.5
B,0	39.2	32.4	-6.8
B,1	42.6	33.0	-9.6
B,2	45.8	34.0	-11.8
B,3	45.7	35.3	-10.4
C,-1	36.7	33.3	-3.4
C,0	37.1	33.3	-3.8
C,1	39.5	33.6	-6.0
C,2	44.8	34.4	-10.4
C,3	46.5	35.3	-11.2
D,-1	32.6	34.1	1.5
D,0	33.3	33.7	0.4
D,1	37.3	33.7	-3.6
D,2	43.0	34.1	-9.0
E,-1	31.4	33.9	2.5
E,0	33.1	33.2	0.1
E,1	36.2	33.0	-3.2
E,2	40.6	33.4	-7.2
F,1	36.5	32.9	-3.7
F,2	39.4	33.7	-5.8
G,1	42.5	33.9	-8.6

3rd Quarter 2006 — DEN 65 LDN Contour



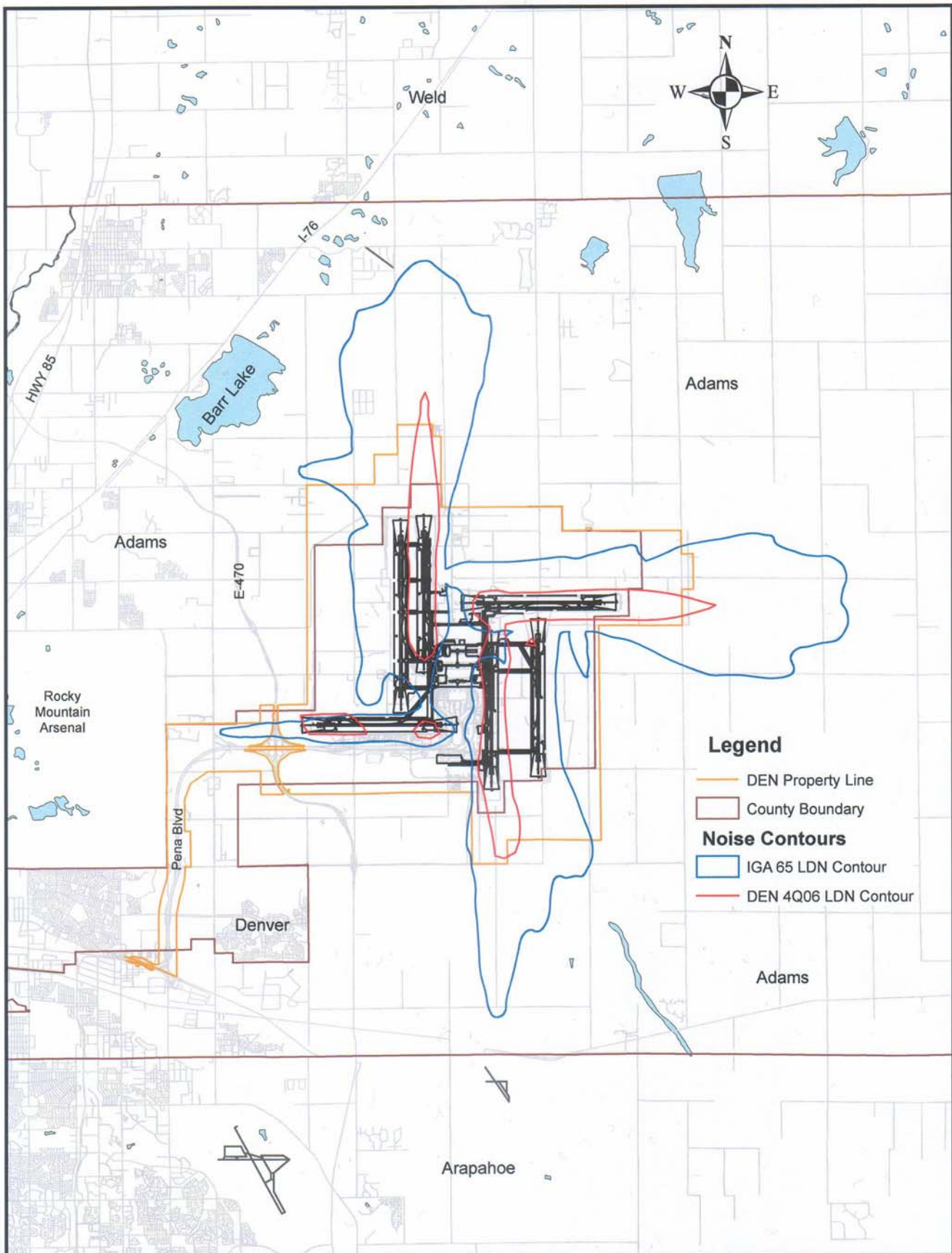
3rd Quarter 2006 — Denver/Adams County IGA NEPS Values

Area 2 3Q06			
Grid Points	IGA Annual Leq (24)	Calculated Leq (24)	Difference Leq
A,1	38.6	37.2	-1.4
A,2	37.6	37.7	0.1
A,3	42.3	39.1	-3.2
A,4	45.3	40.7	-4.6
A,5	43.9	41.8	-2.1
A,6	37.5	39.7	2.2
A,7	37.7	37.6	-0.1
A,8	36.5	36.0	-0.5
A,9	36.3	35.6	-0.8
A,10	37.6	35.5	-2.1
A,11	39.2	34.9	-4.3
A,12	41.2	34.0	-7.2
B,2	39.5	38.2	-1.3
B,4	42.5	41.3	-1.2
B,5	43.1	42.8	-0.3
B,6	39.0	40.3	1.3
B,7	39.0	37.7	-1.3
B,8	38.0	36.4	-1.7
B,9	38.3	36.8	-1.5
B,10	39.0	36.9	-2.1
B,11	40.4	36.1	-4.3
B,12	42.6	35.2	-7.5
C,2	41.0	39.0	-2.0
C,3	43.3	39.7	-3.6
C,4	43.5	42.0	-1.5
C,5	43.4	43.9	0.5
C,6	43.3	41.0	-2.3
C,7	43.3	37.9	-5.4
C,8	42.6	37.2	-5.4
C,9	42.2	38.3	-3.9
C,10	41.6	38.0	-3.6
C,11	42.5	36.7	-5.8
C,12	44.3	35.5	-8.8
D,2	41.7	39.9	-1.8
D,3	46.2	40.2	-6.0
D,4	48.4	42.6	-5.8
D,5	48.2	45.2	-3.0
D,6	46.2	41.7	-4.5
D,7	44.2	38.3	-5.9
D,8	43.7	38.5	-5.2
D,9	43.1	39.6	-3.6
D,10	44.9	38.2	-6.7
D,11	44.5	36.4	-8.1
D,12	45.1	35.1	-10.0
E,1	42.4	39.4	-3.0
E,2	42.2	41.1	-1.1
E,3	46.7	41.1	-5.6
E,4	51.2	43.3	-7.9
E,5	51.0	46.6	-4.4
E,6	44.6	42.3	-2.3
E,9	43.1	40.1	-3.0
E,10	43.1	37.8	-5.3
E,11	46.1	35.9	-10.2

Area 1 3Q06			
Grid Points	IGA Annual Leq (24)	Calculated Leq (24)	Difference Leq
C,4	44.2	35.8	-8.4
C,5	36.7	34.3	-2.5
C,6	36.0	33.6	-2.4
D,4	41.1	35.1	-6.0
D,5	34.2	34.5	0.3
D,6	36.0	34.5	-1.6
D,7	41.4	35.1	-6.3
E,4	38.3	35.1	-3.2
E,5	34.8	35.1	0.3
E,6	36.7	34.2	-2.5
E,7	41.4	34.5	-6.9
F,2	51.7	38.7	-13.0
F,3	43.7	35.4	-8.3
F,5	37.3	33.8	-3.5
F,6	38.5	33.8	-4.7
F,7	42.1	34.4	-7.7
G,2	51.2	40.3	-11.0
G,3	42.1	36.7	-5.5
G,4	40.2	35.4	-4.8
H,2	50.1	41.8	-8.3
H,3	46.0	37.1	-8.9
H,4	46.1	36.5	-9.6

Area 3 3Q06			
Grid Points	IGA Annual Leq (24)	Calculated Leq (24)	Difference Leq
A,-1	38.9	32.5	-6.4
A,0	39.6	32.2	-7.4
A,1	43.2	32.7	-10.6
A,2	45.7	33.7	-12.0
A,3	45.6	35.5	-10.1
B,-1	37.9	32.4	-5.5
B,0	39.2	32.3	-7.0
B,1	42.6	32.5	-10.1
B,2	45.8	33.5	-12.3
B,3	45.7	35.2	-10.5
C,-1	36.7	33.3	-3.4
C,0	37.1	33.3	-3.8
C,1	39.5	33.5	-6.0
C,2	44.8	33.7	-11.1
C,3	46.5	34.9	-11.6
D,-1	32.6	34.1	1.5
D,0	33.3	33.7	0.4
D,1	37.3	33.4	-3.9
D,2	43.0	33.9	-9.1
E,-1	31.4	34.4	3.0
E,0	33.1	33.2	0.1
E,1	36.2	32.8	-3.4
E,2	40.6	33.4	-7.2
F,1	36.5	32.6	-3.9
F,2	39.4	33.2	-6.3
G,1	42.5	33.2	-9.3

4th Quarter 2006 — DEN 65 LDN Contour



 DEN 4Q06 65 LDN Contour

0 0.5 1 2 3 4 Miles

4th Quarter 2006 — Denver/Adams County IGA NEPS Values

Area 2 4Q06			
Grid Points	IGA Annual Leq (24)	Calculated Leq (24)	Difference Leq
A,1	38.6	36.2	-2.4
A,2	37.6	37.2	-0.4
A,3	42.3	38.5	-3.8
A,4	45.3	39.7	-5.6
A,5	43.9	40.2	-3.8
A,6	37.5	38.5	1.0
A,7	37.7	36.6	-1.1
A,8	36.5	35.4	-1.1
A,9	36.3	35.1	-1.2
A,10	37.6	35.1	-2.5
A,11	39.2	34.6	-4.6
A,12	41.2	33.8	-7.4
B,2	39.5	37.4	-2.1
B,4	42.5	40.4	-2.1
B,5	43.1	41.2	-1.9
B,6	39.0	39.1	0.1
B,7	39.0	36.9	-2.1
B,8	38.0	35.9	-2.1
B,9	38.3	36.3	-2.0
B,10	39.0	36.6	-2.5
B,11	40.4	35.8	-4.6
B,12	42.6	34.9	-7.8
C,2	41.0	38.0	-3.0
C,3	43.3	39.0	-4.3
C,4	43.5	41.0	-2.5
C,5	43.4	42.2	-1.2
C,6	43.3	39.7	-3.6
C,7	43.3	37.2	-6.1
C,8	42.6	36.8	-5.8
C,9	42.2	37.8	-4.4
C,10	41.6	37.7	-3.9
C,11	42.5	36.3	-6.2
C,12	44.3	35.2	-9.1
D,2	41.7	38.9	-2.8
D,3	46.2	39.4	-6.8
D,4	48.4	41.6	-6.8
D,5	48.2	43.3	-4.9
D,6	46.2	40.2	-6.0
D,7	44.2	37.6	-6.7
D,8	43.7	38.1	-5.7
D,9	43.1	39.1	-4.0
D,10	44.9	37.9	-7.0
D,11	44.5	36.1	-8.4
D,12	45.1	34.7	-10.4
E,1	42.4	38.6	-3.8
E,2	42.2	39.9	-2.3
E,3	46.7	40.0	-6.7
E,4	51.2	42.3	-8.9
E,5	51.0	44.6	-6.4
E,6	44.6	40.9	-3.7
E,9	43.1	39.7	-3.4
E,10	43.1	37.7	-5.4
E,11	46.1	35.7	-10.5

Area 1 4Q06			
Grid Points	IGA Annual Leq (24)	Calculated Leq (24)	Difference Leq
C,4	44.2	35.2	-9.0
C,5	36.7	33.6	-3.1
C,6	36.0	33.1	-2.9
D,4	41.1	34.7	-6.4
D,5	34.2	34.5	0.3
D,6	36.0	34.6	-1.4
D,7	41.4	35.4	-6.0
E,4	38.3	34.3	-4.0
E,5	34.8	35.1	0.3
E,6	36.7	34.6	-2.1
E,7	41.4	34.9	-6.5
F,2	51.7	37.9	-13.8
F,3	43.7	34.7	-9.0
F,5	37.3	33.1	-4.2
F,6	38.5	33.7	-4.8
F,7	42.1	34.3	-7.8
G,2	51.2	38.9	-12.3
G,3	42.1	35.0	-7.1
G,4	40.2	33.6	-6.6
H,2	50.1	40.3	-9.8
H,3	46.0	36.1	-9.9
H,4	46.1	35.1	-11.0

Area 3 4Q06			
Grid Points	IGA Annual Leq (24)	Calculated Leq (24)	Difference Leq
A,-1	38.9	32.3	-6.6
A,0	39.6	32.2	-7.4
A,1	43.2	32.7	-10.5
A,2	45.7	33.6	-12.1
A,3	45.6	35.1	-10.5
B,-1	37.9	31.8	-6.1
B,0	39.2	32.5	-6.7
B,1	42.6	32.2	-10.4
B,2	45.8	33.0	-12.8
B,3	45.7	34.3	-11.4
C,-1	36.7	32.4	-4.3
C,0	37.1	32.3	-4.8
C,1	39.5	32.9	-6.6
C,2	44.8	33.0	-11.8
C,3	46.5	34.0	-12.5
D,-1	32.6	32.9	0.3
D,0	33.3	32.7	-0.6
D,1	37.3	32.5	-4.8
D,2	43.0	33.1	-9.9
E,-1	31.4	33.7	2.3
E,0	33.1	32.6	-0.5
E,1	36.2	31.7	-4.5
E,2	40.6	31.8	-8.8
F,1	36.5	32.8	-3.7
F,2	39.4	31.7	-7.7
G,1	42.5	32.0	-10.5



VISION

Working together, we will be the world's finest airport.

MISSION

Enhancing economic prosperity and quality of life in the Denver region
by connecting its people and products to the world.

Leading the aviation industry in safety, service, convenience, efficiency,
innovative practices, aesthetics and financial strength.

Please visit www.flydenver.com
for other DEN Noise Office
Reports and information.

Denver International Airport Noise Office

Noise Office
8500 Peña Boulevard
AOB, 6th Level, NW Corner
Mail Code 285
Denver, CO 80249-6460

Main Phone: 303.342.2000
Noise Hotline: 303.342.2380
Toll Free Noise Hotline: 1.800.417.2988
Fax: 303.342.2366
Email: Noise.Office@diadenver.net