

2008 Cumulative Noise Report

DENVER INTERNATIONAL AIRPORT

January 1st – December 31st, 2008

Issued January 30th, 2009

January 1st to December 31st, 2008 Cumulative Results

The number of potential Class II NEPS violations registered during January 1st through December 31st, 2008 is zero. In 2007, there was one potential Class II NEPS violation. Please see page 6 for DEN NEPS information.

There was no potential 65 DNL noise contour violation for the time period. The 65 DNL contour continued to be completely contained within the boundaries of the City and County of Denver. Please see page 5 for DEN contour map.

There was a 12.1% decrease in noise complaints received in 2008 as compared to 2007 (1,072 vs. 942 in 2008). The number of households registering at least one complaint increased by 59.7% (115 vs. 72 in 2007). Five households registered a combined 54% of total complaints. The percentage of complaints received during Nighttime Aircraft Operations (10:00pm to 7:00am) for 2008 was 13.5% of total complaints received. Please see pages 7 and 8 for complete complaint and operational data.

A New Low in 2008

2008 was the first year since Denver International Airport opened that there were no Class II NEPS violations. This result was the culmination of a multi-year downward trend in aircraft noise exposure. Due to the efforts of the DIA Noise Abatement Office, DIA Operations Department, DIA tenant airlines, and the Federal Aviation Administration, noise levels continued to decrease even though DIA has accommodated increasing aircraft operations during the same time period.



Rumors that the big blue horse contributed to the decrease can be neither confirmed nor denied, though he is known to have quite an effect on his surroundings.

Inside this issue:

NEPS and RMT Map	4
2008 Contour Map	5
2008 NEPS Map	6
Jan–Dec, 2008 Statistics	7–9
Cumulative Statistics	10–16

Special points of interest:

- ZERO potential NEPS Violations for January - December, 2008, page 6.
- Complaints are down 12.1% compared to 2007, page 7.
- Complaint map, page 8.
- See page 9 for runway usage.



DEN Airport Noise and Operations System

The DEN Airport Noise and Operations Monitoring System (ANOMS) is a state-of-the-art computer system designed to enable the City and County of Denver to monitor aircraft noise in the vicinity of the airport. In addition to monitoring noise levels, the system calculates Noise Exposure Performance Standards (NEPS) at 101 grid points in Adams County (see map on page 4 for NEPS locations).

The DEN ANOMS system monitors noise levels at 27 permanent and 4 portable noise monitoring terminals. These terminals are located throughout the Denver metro area (see map on page 4 for RMT locations).

ARTSMAP

ARTSMAP is a specially designed noise modeling program that automatically creates noise contours. ARTSMAP is designed to create contours from actual radar flight tracks that our office receives from the FAA ARTS system which is sent via modem, eliminating the need for manual data manipulation. The ARTSMAP software is installed on a computer in the Noise Abatement Office. The program analyzes, views, reports, and stores the data.

Land Use and Zoning

Urban growth and development in the areas surrounding DEN, particularly non-compatible residential and other noise-sensitive land uses, is of utmost concern to the City and County of Denver.

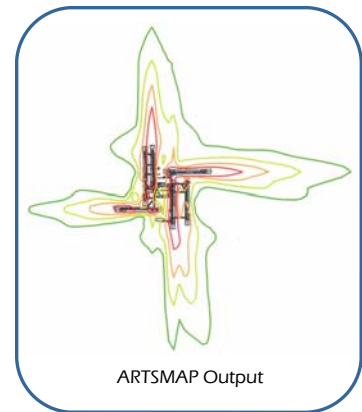
The Noise Office has developed noise contours surrounding the airport, inside which certain types of land uses are not recommended. The 65 Ldn noise contour (average decibel level with a 10 decibel penalty applied to nighttime operations) is a line inside which, under Federal guidelines, no residential

The system also records the movement of all aircraft in the vicinity of DEN by utilizing FAA air traffic control radar data. This makes it possible to match actual flights with noise events.

In addition, the ANOMS system records weather information from three remote stations, which include a RACAL recording device to record pilot/controller radio transmissions.



Remote Monitoring Terminal (RMT) with a weather collecting station.

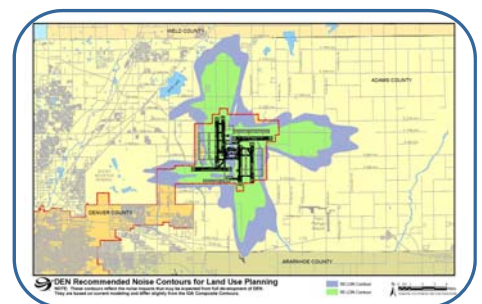


ARTSMAP Output

Currently, ARTSMAP is used at several major airports nationally. It allows the DEN Noise Abatement Office to perform noise data analysis, generate daily automated noise contours, receive detailed runway utilization, and airline fleet mix identification.

development should occur.

The operational 65 Ldn noise contour for the airport, as created by ARTSMAP, is included in this report. However, for DEN, the 60 Ldn noise contour is used for compatible land use planning by the surrounding jurisdictions, in accordance with guidelines promulgated by the Denver Regional Council of Governments and the Denver/Adams County Intergovernmental Agreement. Additional mapping for DEN that includes the applicable noise contours is available upon request.





DEN Noise Hotline Policy

The purpose of the DEN Noise Complaint Hotline is to provide an opportunity for individuals to express their concerns regarding noise generated by aircraft operating at DEN. Citizens are asked to leave their name, address and the date and time of their complaint on the hotline. Complaints are downloaded daily by our Noise Officers and then transcribed into the ANOMS system, where specific complaints can be matched to individual flight tracks. It is essential for all information to be entered correctly in order for the system to be effective.

Profanity will not be tolerated, and will result in the complaint not being registered. Any attempt to deliberately tie-up or abuse the Hotline may result in police action. Phone harassment is a state criminal offense and can carry a jail sentence and/or fine. Threats involving aircraft and/or the airport are a very serious matter and are a federal criminal offense. To make a threat, even jokingly, will result in a notification to the Denver Police Department and may involve an FBI investigation.



Glossary of Terms

Sound: A rapid variation in air pressure, which is perceived by the ear and brain as sound.

Noise: Generally considered to be any sound, which is deemed undesirable by an individual.

Decibel: Sound is measured by its pressure or energy in terms of decibels. The decibel scale is logarithmic; when the decibel level increases by 6 dB, the measured sound is twice as loud.

Noise Abatement: A measure or action that minimizes the amount or impact of noise on the environs of an airport. Noise abatement measures include aircraft operating procedures and use or disuse of certain runways or flight tracks. These operating procedures are controlled by the FAA.

A-Weighted Sound Level (dBA): A type of sound level measurement which reduces the effect of very high and very low frequencies in order to mimic the response of the human ear. Nearly all aircraft sound level measurement is conducted using A-weighting.

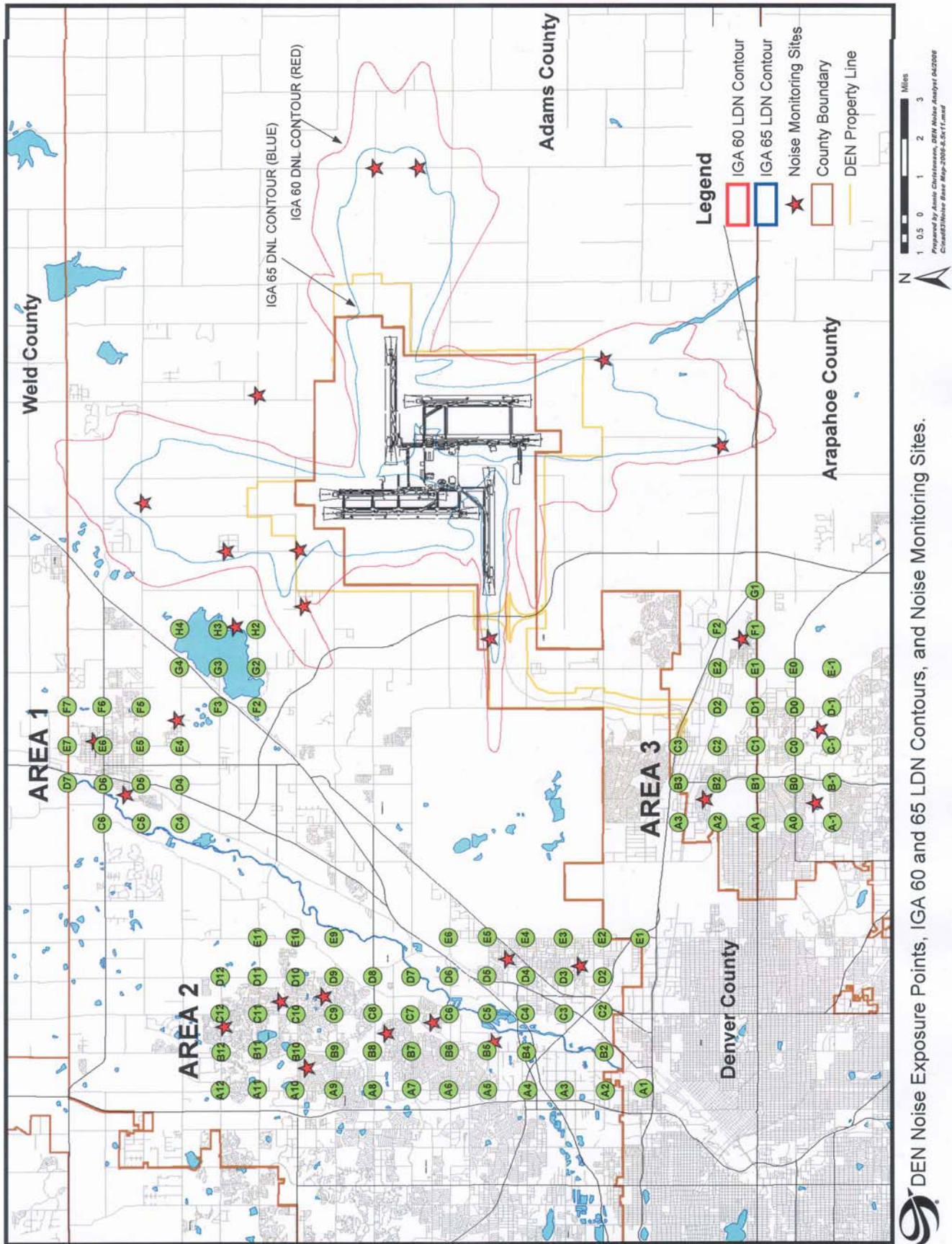
Equivalent Continuous Sound Level (Leq): A measurement of the average sound energy experienced over a period of time. This average sound level is expressed in decibels, and includes a notation of the period of time, which it covers (such as Leq (24) for an average of the sound level over a 24-hour period).

Day Night Level (Ldn): Also referred to as DNL. Similar to a Leq measurement, but is conducted over at least a 24-hour time span and includes a 10dB nighttime penalty. For an Ldn calculation, all noise that occurs at night (defined as 10:00 pm to 7:00 am) is artificially increased for the public's increased sensitivity to noise during these hours.

Noise Contour: A line surrounding an airport that encloses a geographic region, which is exposed to a particular Ldn level. These contour lines are nested in such a way that contours closer to the airport generally surround areas that experience higher noise levels than contours farther out. Annual Ldn contours are used to determine whether certain types of zoning or land uses are compatible with particular annual Ldn noise levels. 65 Ldn is considered by many federal agencies to be the level at which residential land use becomes incompatible.

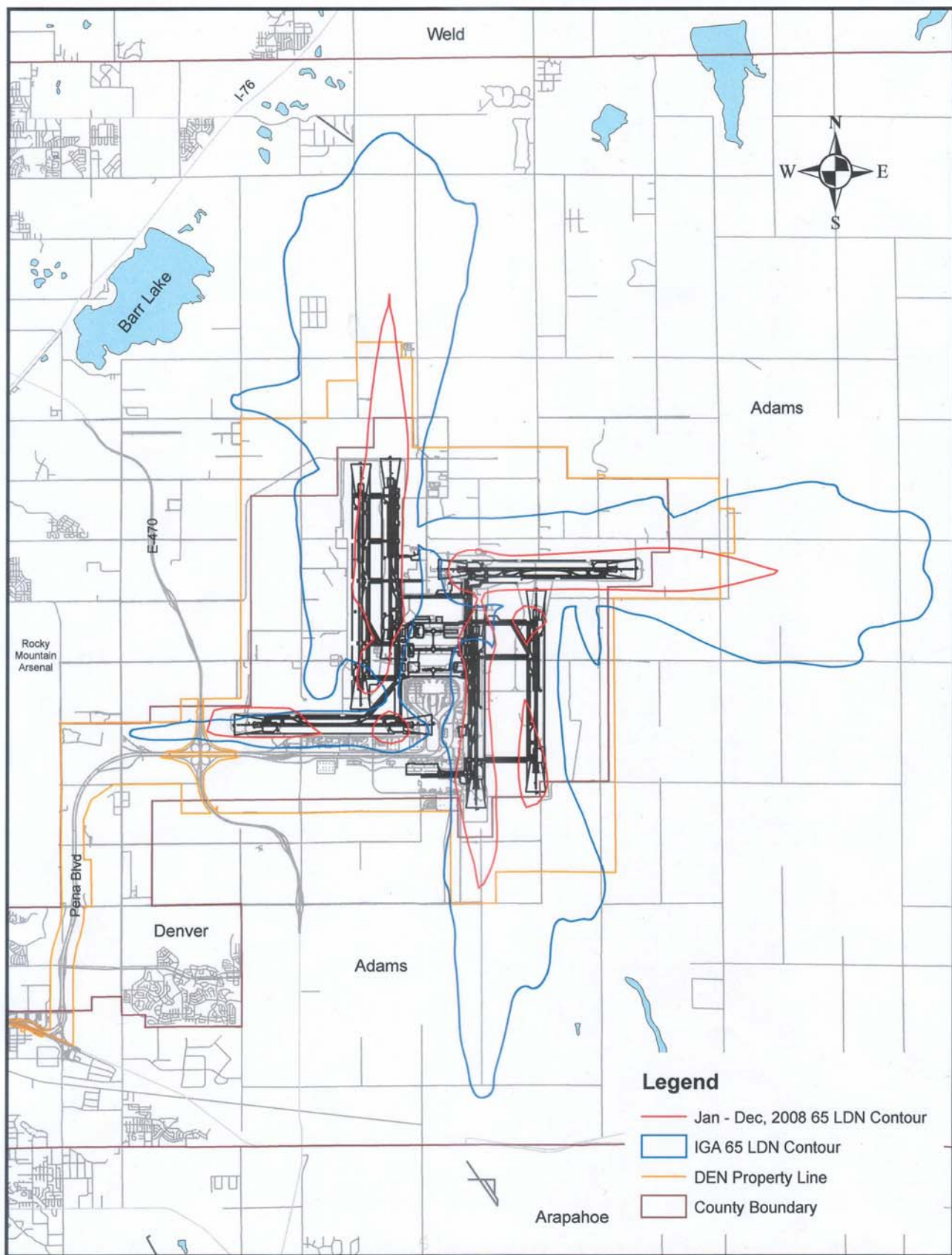
Remote Monitoring Terminal (RMT): Consists of a noise level analyzer, a weatherproof microphone, a system controller, a power supply, and a dedicated telephone line to download noise data to the ANOMS system, all mounted in a weatherproof cabinet.

Noise Exposure Performance Standards (NEPS) Grid Coordinates, IGA Contour, and Remote Monitoring Terminal (RMT) Locations

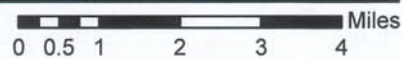


DEN Noise Exposure Points, IGA 60 and 65 LDN Contours, and Noise Monitoring Sites.

January 1 - December 31, 2008—DEN 65 LDN Contour



DEN January 1 - December 31, 2008 65 LDN Contour



January 1 - December 31, 2008—Denver/Adams County IGA NEPS Values

Area 2 January 1 through December 31, 2008			
Grid Points	IGA Annual Leq (24)	Calculated Leq (24)	Difference Leq
A,1	38.6	38.5	-0.1
A,2	37.6	38.4	0.8
A,3	42.3	37.8	-4.6
A,4	45.3	38.2	-7.1
A,5	43.9	38.7	-5.2
A,6	37.5	37.2	-0.3
A,7	37.7	36.7	-1.0
A,8	36.5	37.0	0.5
A,9	36.3	37.9	1.6
A,10	37.6	37.5	-0.1
A,11	39.2	36.1	-3.2
A,12	41.2	35.0	-6.2
B,2	39.5	39.4	-0.1
B,4	42.5	38.9	-3.6
B,5	43.1	39.6	-3.5
B,6	39.0	37.8	-1.3
B,7	39.0	37.4	-1.7
B,8	38.0	38.1	0.1
B,9	38.3	39.1	0.8
B,10	39.0	38.2	-0.9
B,11	40.4	36.6	-3.8
B,12	42.6	35.8	-6.8
C,2	41.0	40.4	-0.6
C,3	43.3	39.3	-4.0
C,4	43.5	39.6	-3.9
C,5	43.4	40.6	-2.8
C,6	43.3	38.4	-4.9
C,7	43.3	38.0	-5.3
C,8	42.6	39.3	-3.3
C,9	42.2	40.1	-2.1
C,10	41.6	38.5	-3.1
C,11	42.5	36.8	-5.7
C,12	44.3	36.1	-8.2
D,2	41.7	41.4	-0.3
D,3	46.2	40.3	-5.9
D,4	48.4	40.2	-8.2
D,5	48.2	41.9	-6.4
D,6	46.2	39.0	-7.2
D,7	44.2	38.9	-5.3
D,8	43.7	40.8	-2.9
D,9	43.1	40.8	-2.3
D,10	44.9	38.2	-6.7
D,11	44.5	36.5	-8.0
D,12	45.1	35.9	-9.2
E,1	42.4	40.1	-2.3
E,2	42.2	42.3	0.1
E,3	46.7	41.8	-4.9
E,4	51.2	41.0	-10.2
E,5	51.0	43.1	-7.9
E,6	44.6	39.7	-4.9
E,9	43.1	40.8	-2.3
E,10	43.1	37.5	-5.6
E,11	46.1	36.1	-10.0

Area 1 January 1 through December 31, 2008			
Grid Points	IGA Annual Leq (24)	Calculated Leq (24)	Difference Leq
C,4	44.2	36.4	-7.8
C,5	36.7	34.1	-2.6
C,6	36.0	33.3	-2.7
D,4	41.1	35.7	-5.4
D,5	34.2	34.5	0.3
D,6	36.0	34.1	-1.9
D,7	41.4	34.7	-6.7
E,4	38.3	35.1	-3.2
E,5	34.8	34.9	0.1
E,6	36.7	33.8	-2.9
E,7	41.4	33.8	-7.6
F,2	51.7	41.5	-10.2
F,3	43.7	37.5	-6.2
F,5	37.3	33.4	-4.0
F,6	38.5	33.2	-5.3
F,7	42.1	33.4	-8.8
G,2	51.2	42.4	-8.9
G,3	42.1	37.0	-5.1
G,4	40.2	34.1	-6.1
H,2	50.1	42.7	-7.4
H,3	46.0	36.9	-9.1
H,4	46.1	34.5	-11.6

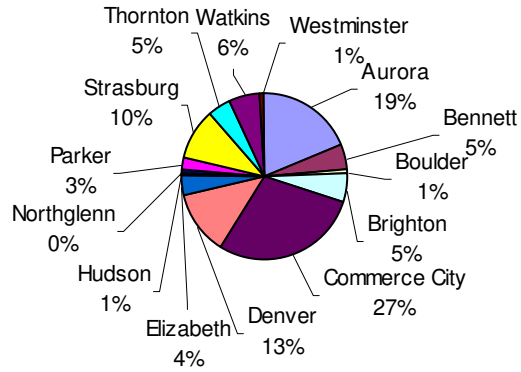
Area 3 January 1 through December 31, 2008			
Grid Points	IGA Annual Leq (24)	Calculated Leq (24)	Difference Leq
A,-1	38.9	32.5	-6.4
A,0	39.6	32.9	-6.7
A,1	43.2	33.9	-9.3
A,2	45.7	35.3	-10.4
A,3	45.6	37.1	-8.5
B,-1	37.9	32.5	-5.5
B,0	39.2	32.7	-6.5
B,1	42.6	33.5	-9.1
B,2	45.8	34.9	-10.9
B,3	45.7	36.8	-8.9
C,-1	36.7	33.0	-3.7
C,0	37.1	33.1	-4.1
C,1	39.5	33.6	-5.9
C,2	44.8	34.7	-10.1
C,3	46.5	36.7	-9.8
D,-1	32.6	33.5	0.9
D,0	33.3	33.3	0.0
D,1	37.3	33.4	-3.9
D,2	43.0	34.2	-8.8
E,-1	31.4	33.4	2.0
E,0	33.1	32.6	-0.5
E,1	36.2	32.7	-3.6
E,2	40.6	33.4	-7.2
F,1	36.5	32.5	-4.0
F,2	39.4	33.5	-5.9
G,1	42.5	33.4	-9.1

January 1 - December 31, 2008—DEN Complaint and Operational Statistics

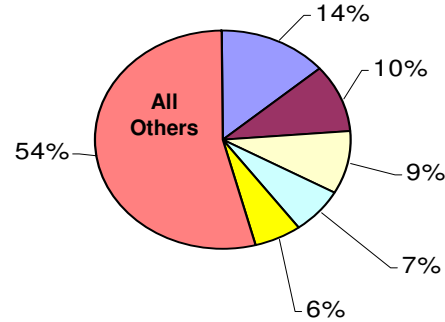
2008 Noise Complaint Calls by Community*

Community*	No. of Calls 2008	No. of Callers 2008	No. of Calls 2007	No. of Calls 2006
Arvada	0	0	0	1
Aurora	181	13	267	207
Bennett	45	3	82	11
Boulder	8	2	19	12
Brighton	51	10	93	50
Castle Rock	0	0	23	0
Commerce City	267	31	80	95
Denver	119	16	88	26
Elizabeth	35	7	216	81
Englewood	0	0	0	1
Evergreen	0	0	0	7
Fort Lupton	0	0	0	3
Golden	0	0	0	4
Henderson	0	0	0	6
Hudson	6	2	3	2
Kiowa	0	0	0	1
Lafayette	0	0	0	1
Lakewood	0	0	0	25
Lochbuie	0	0	21	43
Northglenn	4	3	0	11
Parker	24	6	27	25
Strasburg	94	1	0	0
Thornton	44	6	44	28
Watkins	57	14	9	29
Westminster	7	1	100	44
Overall Total	942	115	1,072	713

Total Calls for 2008 by Community



Top Five Complainants Vs. All Others

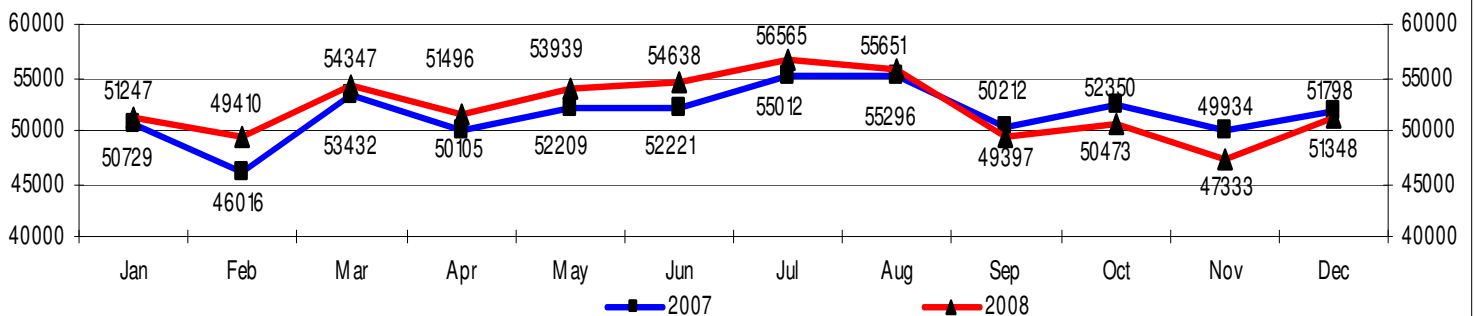


* See map on next page for location of known noise complaints.

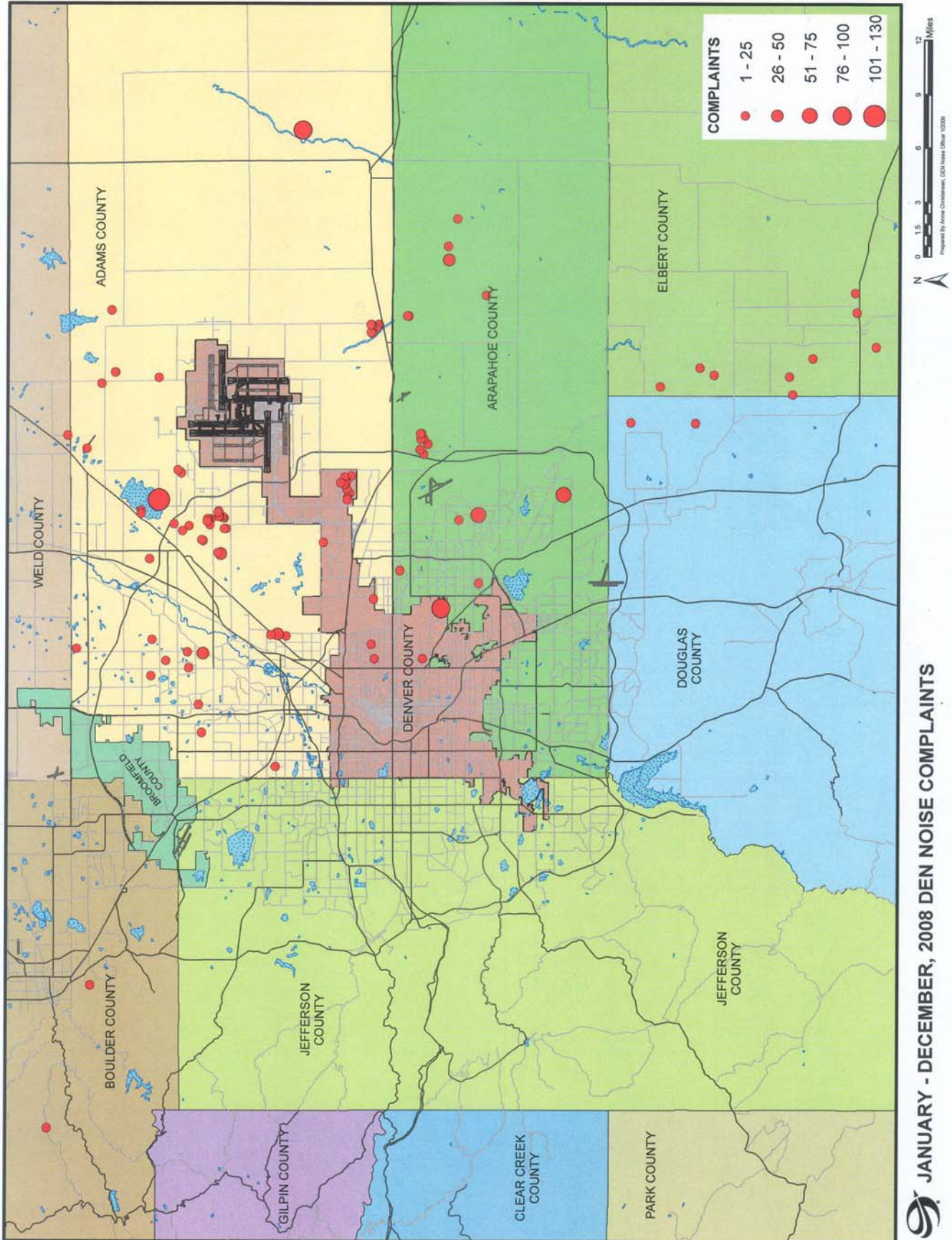
Monthly Comparison: 2008 Noise Complaint Calls - Daytime vs. Nighttime

Time Complaint Received	January	February	March	April	May	June	July	August	September	October	November	December	2008 Total
Day Hours (7:00 am to 9:59 pm)	26	27	84	34	127	115	63	123	81	58	41	35	814
Night Hours (10:00 pm to 6:59 am)	5	0	20	1	0	15	13	23	12	23	6	10	128
Total	31	27	104	35	127	130	76	146	93	81	47	45	942

Monthly Comparison: 2007 Total Operations vs. 2008 Total Operations

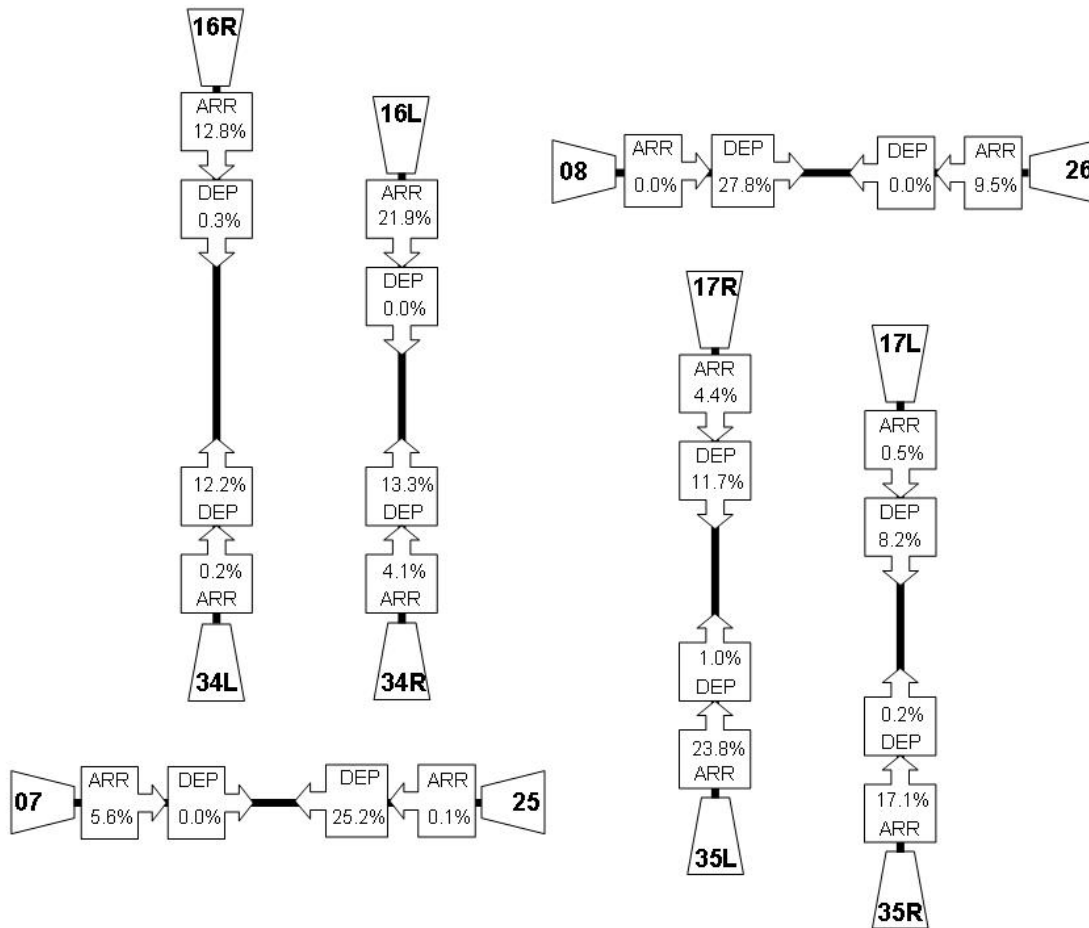


January 1 - December 31, 2008—DEN Complaint Location Map

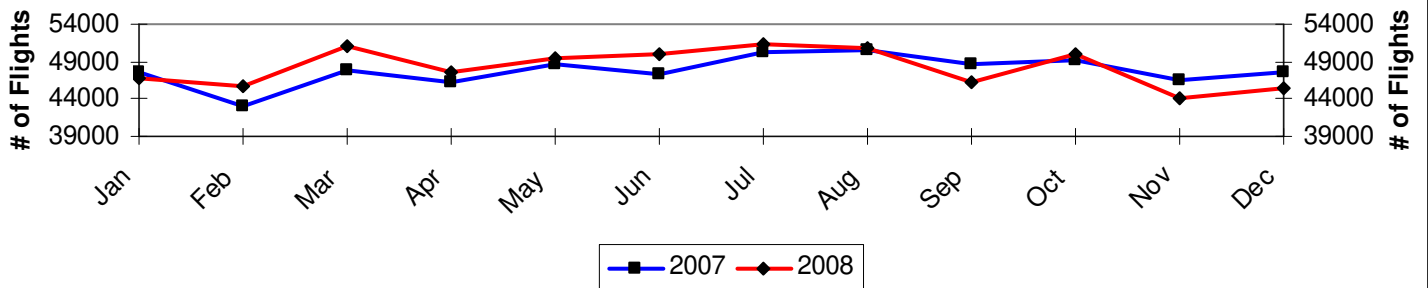


JANUARY - DECEMBER, 2008 DEN NOISE COMPLAINTS

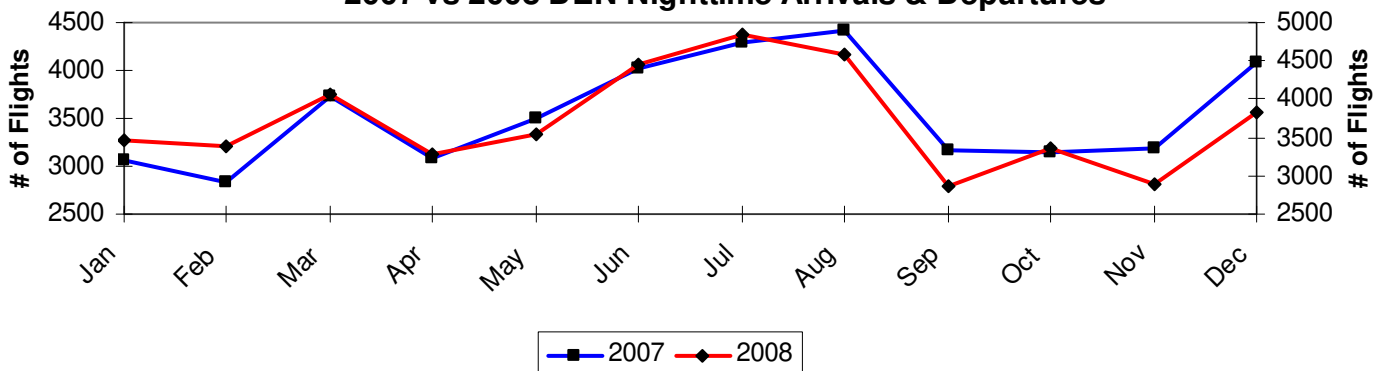
January 1 - December 31, 2008 DEN RWY Utilization and Day/Night Statistics



2007 vs. 2008 DEN Daytime Arrivals & Departures



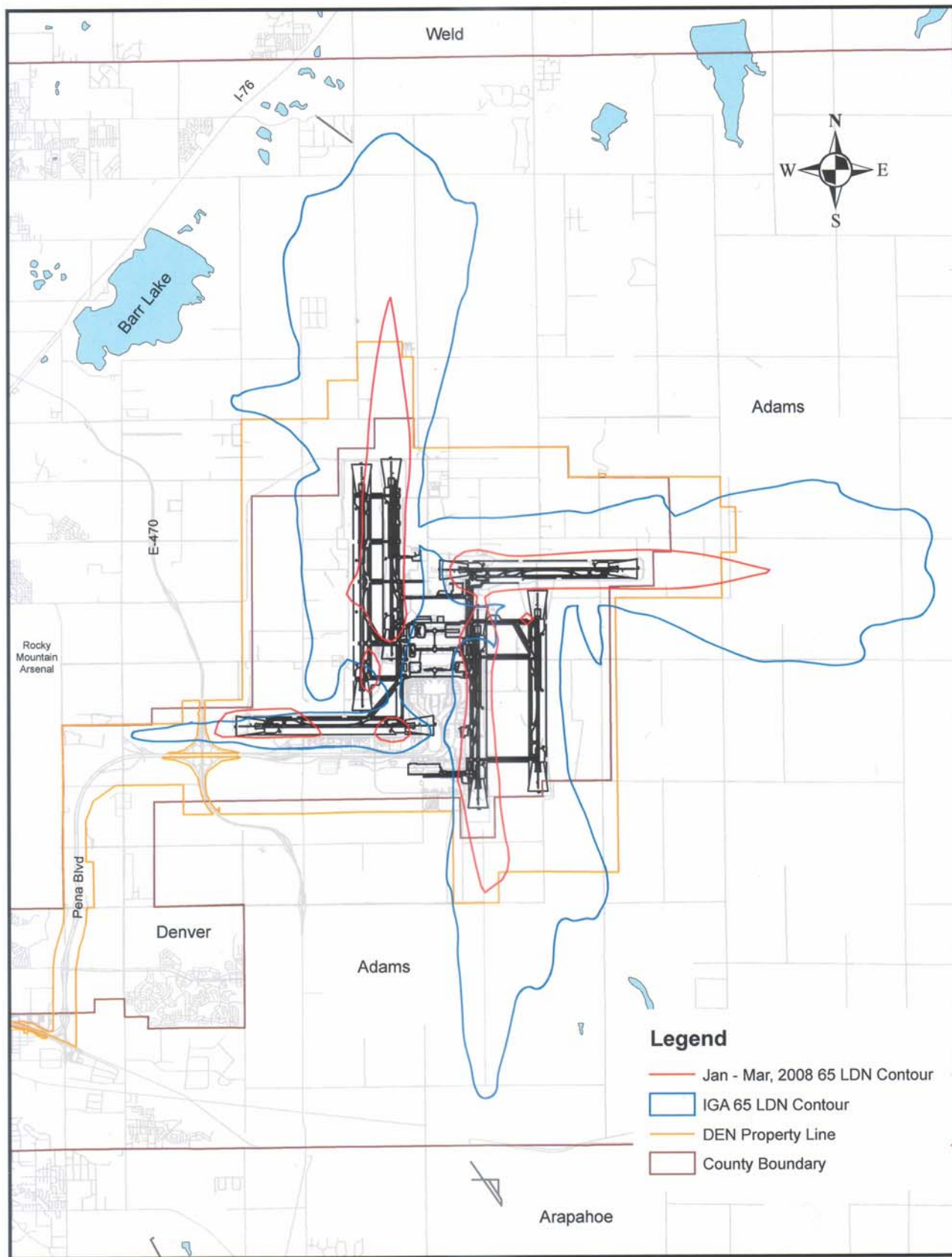
2007 vs. 2008 DEN Nighttime Arrivals & Departures



Quarterly Cumulative Contour Maps and NEPS Tables

- 1Q08 January 1, 2008 through March 31, 2008 (pages 11-12)
- 2Q08 January 1, 2008 through June 30, 2008 (pages 13-14)
- 3Q08 January 1, 2008 through September 30, 2008 (pages 15-16)

January 1 - March 31, 2008—DEN 65 LDN Contour



 DEN January - March, 2008 Cumulative Contour

0 0.5 1 2 3 4 Miles

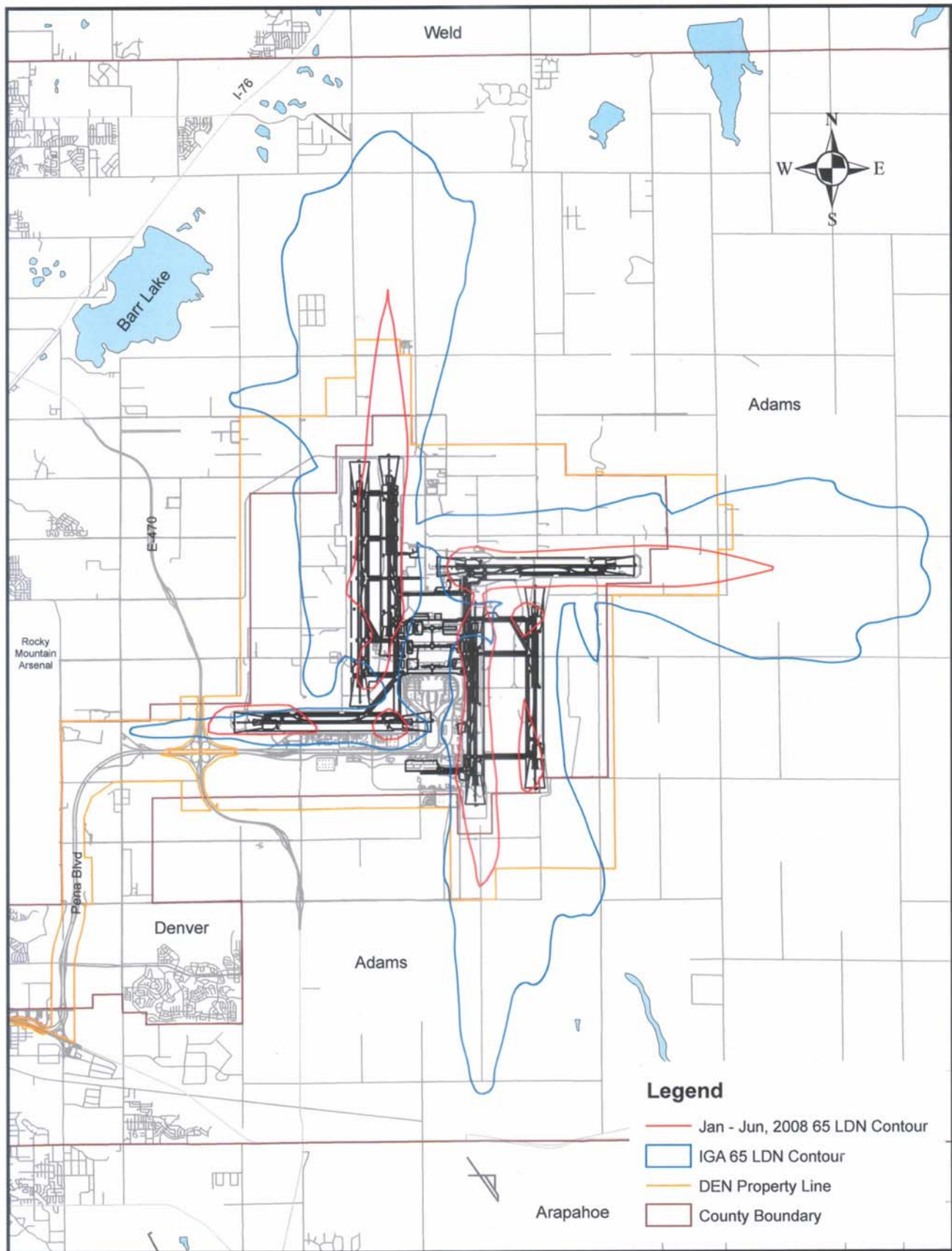
January 1 - March 31, 2008—Denver/Adams County IGA NEPS Values

Area 2 January 1 - March 31, 2008			
Grid Points	IGA Annual Leq (24)	Calculated Leq (24)	Difference Leq
A,1	38.6	38.0	-0.6
A,2	37.6	38.1	0.5
A,3	42.3	37.6	-4.7
A,4	45.3	38.2	-7.1
A,5	43.9	38.6	-5.3
A,6	37.5	37.3	-0.2
A,7	37.7	36.4	-1.3
A,8	36.5	36.1	-0.4
A,9	36.3	36.5	0.2
A,10	37.6	36.2	-1.4
A,11	39.2	35.1	-4.2
A,12	41.2	34.1	-7.1
B,2	39.5	38.9	-0.6
B,4	42.5	38.9	-3.6
B,5	43.1	39.6	-3.6
B,6	39.0	37.9	-1.1
B,7	39.0	37.1	-1.9
B,8	38.0	37.0	-1.1
B,9	38.3	37.6	-0.7
B,10	39.0	37.1	-1.9
B,11	40.4	35.9	-4.6
B,12	42.6	35.0	-7.6
C,2	41.0	39.9	-1.2
C,3	43.3	38.9	-4.4
C,4	43.5	39.5	-4.0
C,5	43.4	40.5	-2.9
C,6	43.3	38.5	-4.8
C,7	43.3	37.4	-5.9
C,8	42.6	37.9	-4.7
C,9	42.2	38.7	-3.5
C,10	41.6	37.7	-3.9
C,11	42.5	36.2	-6.3
C,12	44.3	35.2	-9.1
D,2	41.7	40.8	-0.9
D,3	46.2	39.8	-6.4
D,4	48.4	40.2	-8.3
D,5	48.2	41.6	-6.6
D,6	46.2	39.1	-7.1
D,7	44.2	38.0	-6.2
D,8	43.7	39.2	-4.5
D,9	43.1	39.6	-3.5
D,10	44.9	37.6	-7.3
D,11	44.5	35.9	-8.6
D,12	45.1	35.0	-10.1
E,1	42.4	40.0	-2.5
E,2	42.2	42.0	-0.2
E,3	46.7	41.2	-5.5
E,4	51.2	40.8	-10.4
E,5	51.0	42.8	-8.2
E,6	44.6	39.7	-4.9
E,9	43.1	39.9	-3.2
E,10	43.1	37.1	-6.1
E,11	46.1	35.4	-10.7

Area 1 January 1 - March 31, 2008			
Grid Points	IGA Annual Leq (24)	Calculated Leq (24)	Difference Leq
C,4	44.2	35.9	-8.3
C,5	36.7	34.0	-2.7
C,6	36.0	33.4	-2.6
D,4	41.1	35.1	-6.0
D,5	34.2	34.4	0.2
D,6	36.0	34.3	-1.7
D,7	41.4	35.1	-6.3
E,4	38.3	34.5	-3.8
E,5	34.8	35.0	0.2
E,6	36.7	34.0	-2.7
E,7	41.4	34.1	-7.3
F,2	51.7	39.3	-12.4
F,3	43.7	35.8	-7.9
F,5	37.3	33.2	-4.1
F,6	38.5	33.2	-5.3
F,7	42.1	33.5	-8.6
G,2	51.2	39.8	-11.4
G,3	42.1	35.1	-7.0
G,4	40.2	32.8	-7.4
H,2	50.1	40.1	-10.0
H,3	46.0	35.0	-11.0
H,4	46.1	33.7	-12.4

Area 3 January 1 - March 31, 2008			
Grid Points	IGA Annual Leq (24)	Calculated Leq (24)	Difference Leq
A,-1	38.9	32.5	-6.4
A,0	39.6	32.7	-6.9
A,1	43.2	33.6	-9.7
A,2	45.7	34.7	-11.0
A,3	45.6	36.3	-9.3
B,-1	37.9	32.4	-5.5
B,0	39.2	32.5	-6.7
B,1	42.6	33.1	-9.5
B,2	45.8	34.2	-11.6
B,3	45.7	35.6	-10.1
C,-1	36.7	33.0	-3.8
C,0	37.1	32.9	-4.3
C,1	39.5	33.2	-6.3
C,2	44.8	34.0	-10.8
C,3	46.5	35.4	-11.1
D,-1	32.6	33.5	0.9
D,0	33.3	33.1	-0.2
D,1	37.3	33.2	-4.1
D,2	43.0	33.5	-9.5
E,-1	31.4	33.4	2.0
E,0	33.1	32.7	-0.5
E,1	36.2	32.1	-4.1
E,2	40.6	32.3	-8.3
F,1	36.5	31.8	-4.7
F,2	39.4	31.8	-7.6
G,1	42.5	32.3	-10.2

January 1 - June 30, 2008—DEN 65 LDN Contour



 DEN January 1 - June 30, 2008 65 LDN Contour

0 0.5 1 2 3 4 Miles

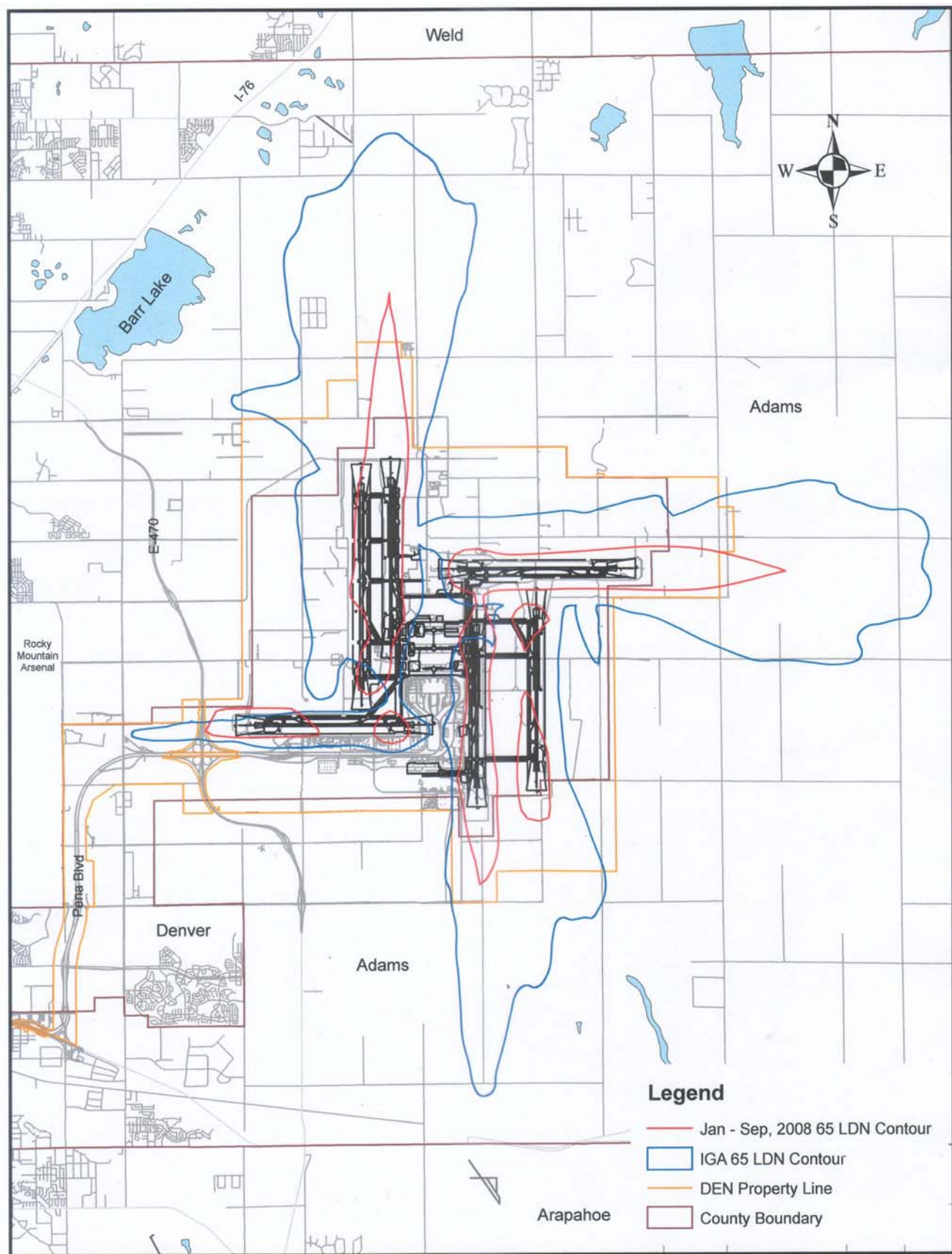
January 1 - June 30, 2008—Denver/Adams County IGA NEPS Values

Area 2 January 1 through June 30, 2008			
Grid Points	IGA Annual Leq (24)	Calculated Leq (24)	Difference Leq
A,1	38.6	38.6	0.0
A,2	37.6	38.4	0.8
A,3	42.3	37.4	-4.9
A,4	45.3	37.7	-7.6
A,5	43.9	38.3	-5.6
A,6	37.5	37.0	-0.5
A,7	37.7	36.4	-1.3
A,8	36.5	36.5	0.0
A,9	36.3	37.2	0.9
A,10	37.6	37.1	-0.5
A,11	39.2	36.0	-3.2
A,12	41.2	35.0	-6.2
B,2	39.5	39.4	-0.1
B,4	42.5	38.4	-4.1
B,5	43.1	39.2	-3.9
B,6	39.0	37.7	-1.3
B,7	39.0	37.1	-1.9
B,8	38.0	37.4	-0.6
B,9	38.3	38.3	0.0
B,10	39.0	37.9	-1.1
B,11	40.4	36.7	-3.8
B,12	42.6	35.9	-6.7
C,2	41.0	40.4	-0.6
C,3	43.3	39.1	-4.2
C,4	43.5	39.1	-4.4
C,5	43.4	40.3	-3.2
C,6	43.3	38.3	-5.0
C,7	43.3	37.7	-5.6
C,8	42.6	38.6	-4.1
C,9	42.2	39.5	-2.7
C,10	41.6	38.4	-3.2
C,11	42.5	36.9	-5.6
C,12	44.3	36.1	-8.2
D,2	41.7	41.5	-0.2
D,3	46.2	40.2	-6.0
D,4	48.4	39.7	-8.7
D,5	48.2	41.5	-6.7
D,6	46.2	38.9	-7.3
D,7	44.2	38.5	-5.7
D,8	43.7	40.0	-3.7
D,9	43.1	40.3	-2.8
D,10	44.9	38.3	-6.7
D,11	44.5	36.6	-7.9
D,12	45.1	36.0	-9.1
E,1	42.4	40.3	-2.1
E,2	42.2	42.6	0.4
E,3	46.7	41.8	-4.9
E,4	51.2	40.4	-10.8
E,5	51.0	42.6	-8.4
E,6	44.6	39.5	-5.1
E,9	43.1	40.6	-2.5
E,10	43.1	37.6	-5.5
E,11	46.1	36.2	-9.9

Area 1 January 1 through June 30, 2008			
Grid Points	IGA Annual Leq (24)	Calculated Leq (24)	Difference Leq
C,4	44.2	36.3	-7.9
C,5	36.7	34.1	-2.6
C,6	36.0	33.3	-2.7
D,4	41.1	35.5	-5.6
D,5	34.2	34.4	0.2
D,6	36.0	34.1	-1.9
D,7	41.4	34.8	-6.6
E,4	38.3	34.9	-3.4
E,5	34.8	34.9	0.1
E,6	36.7	33.7	-3.0
E,7	41.4	33.7	-7.7
F,2	51.7	40.9	-10.8
F,3	43.7	37.0	-6.7
F,5	37.3	33.2	-4.1
F,6	38.5	33.1	-5.4
F,7	42.1	33.2	-8.9
G,2	51.2	41.6	-9.6
G,3	42.1	36.4	-5.7
G,4	40.2	33.5	-6.7
H,2	50.1	41.9	-8.3
H,3	46.0	36.4	-9.6
H,4	46.1	34.2	-11.9

Area 3 January 1 through June 30, 2008			
Grid Points	IGA Annual Leq (24)	Calculated Leq (24)	Difference Leq
A,-1	38.9	32.9	-6.0
A,0	39.6	33.1	-6.5
A,1	43.2	33.9	-9.3
A,2	45.7	35.3	-10.4
A,3	45.6	37.0	-8.6
B,-1	37.9	32.7	-5.2
B,0	39.2	32.9	-6.3
B,1	42.6	33.5	-9.1
B,2	45.8	34.8	-11.0
B,3	45.7	36.5	-9.2
C,-1	36.7	33.3	-3.5
C,0	37.1	33.2	-3.9
C,1	39.5	33.5	-6.0
C,2	44.8	34.6	-10.3
C,3	46.5	36.2	-10.3
D,-1	32.6	33.7	1.1
D,0	33.3	33.4	0.1
D,1	37.3	33.4	-3.9
D,2	43.0	34.0	-9.0
E,-1	31.4	33.4	2.0
E,0	33.1	32.8	-0.4
E,1	36.2	32.9	-3.3
E,2	40.6	33.0	-7.6
F,1	36.5	32.5	-4.0
F,2	39.4	33.3	-6.1
G,1	42.5	33.5	-9.0

January 1 - September 30, 2008—DEN 65 LDN Contour



 DEN January 1 - September 30, 2008 65 LDN Contour

0 0.5 1 2 3 4 Miles

January 1 - September 30, 2008—Denver/Adams County IGA NEPS Values

Area 2 January 1 through September 30, 2008			
Grid Points	IGA Annual Leq (24)	Calculated Leq (24)	Difference Leq
A,1	38.6	38.9	0.3
A,2	37.6	38.7	1.1
A,3	42.3	37.6	-4.8
A,4	45.3	37.9	-7.5
A,5	43.9	38.6	-5.3
A,6	37.5	37.2	-0.3
A,7	37.7	36.7	-1.0
A,8	36.5	37.0	0.5
A,9	36.3	37.9	1.6
A,10	37.6	37.5	-0.1
A,11	39.2	36.2	-3.0
A,12	41.2	35.1	-6.1
B,2	39.5	39.7	0.2
B,4	42.5	38.6	-4.0
B,5	43.1	39.5	-3.6
B,6	39.0	37.8	-1.2
B,7	39.0	37.4	-1.6
B,8	38.0	38.0	0.0
B,9	38.3	39.0	0.7
B,10	39.0	38.2	-0.8
B,11	40.4	36.7	-3.7
B,12	42.6	35.9	-6.7
C,2	41.0	40.8	-0.2
C,3	43.3	39.3	-4.0
C,4	43.5	39.2	-4.3
C,5	43.4	40.6	-2.9
C,6	43.3	38.4	-4.9
C,7	43.3	38.0	-5.3
C,8	42.6	39.2	-3.4
C,9	42.2	40.1	-2.1
C,10	41.6	38.5	-3.1
C,11	42.5	36.8	-5.7
C,12	44.3	36.1	-8.2
D,2	41.7	41.9	0.2
D,3	46.2	40.6	-5.6
D,4	48.4	39.9	-8.5
D,5	48.2	41.8	-6.4
D,6	46.2	39.1	-7.1
D,7	44.2	38.9	-5.3
D,8	43.7	40.7	-3.0
D,9	43.1	40.7	-2.4
D,10	44.9	38.2	-6.7
D,11	44.5	36.5	-8.0
D,12	45.1	36.0	-9.1
E,1	42.4	40.3	-2.1
E,2	42.2	42.8	0.6
E,3	46.7	42.2	-4.5
E,4	51.2	40.7	-10.5
E,5	51.0	43.0	-8.0
E,6	44.6	39.7	-4.9
E,9	43.1	40.8	-2.3
E,10	43.1	37.5	-5.6
E,11	46.1	36.2	-10.0

Area 1 January 1 through September 30, 2008			
Grid Points	IGA Annual Leq (24)	Calculated Leq (24)	Difference Leq
C,4	44.2	36.6	-7.7
C,5	36.7	34.1	-2.6
C,6	36.0	33.3	-2.7
D,4	41.1	35.7	-5.4
D,5	34.2	34.4	0.2
D,6	36.0	34.0	-2.0
D,7	41.4	34.7	-6.7
E,4	38.3	35.1	-3.2
E,5	34.8	34.9	0.1
E,6	36.7	33.6	-3.1
E,7	41.4	33.7	-7.7
F,2	51.7	41.7	-10.0
F,3	43.7	37.7	-6.0
F,5	37.3	33.3	-4.0
F,6	38.5	33.2	-5.3
F,7	42.1	33.3	-8.8
G,2	51.2	42.6	-8.6
G,3	42.1	37.3	-4.8
G,4	40.2	34.2	-6.0
H,2	50.1	43.1	-7.0
H,3	46.0	37.2	-8.8
H,4	46.1	34.6	-11.5

Area 3 January 1 through September 30, 2008			
Grid Points	IGA Annual Leq (24)	Calculated Leq (24)	Difference Leq
A,-1	38.9	32.8	-6.1
A,0	39.6	33.1	-6.5
A,1	43.2	34.2	-9.0
A,2	45.7	35.7	-10.0
A,3	45.6	37.5	-8.1
B,-1	37.9	32.7	-5.2
B,0	39.2	33.0	-6.2
B,1	42.6	33.8	-8.8
B,2	45.8	35.2	-10.6
B,3	45.7	37.3	-8.4
C,-1	36.7	33.4	-3.3
C,0	37.1	33.4	-3.8
C,1	39.5	33.8	-5.7
C,2	44.8	35.0	-9.8
C,3	46.5	37.2	-9.3
D,-1	32.6	33.9	1.3
D,0	33.3	33.6	0.3
D,1	37.3	33.6	-3.7
D,2	43.0	34.5	-8.5
E,-1	31.4	33.7	2.3
E,0	33.1	33.0	-0.1
E,1	36.2	33.2	-3.1
E,2	40.6	33.8	-6.8
F,1	36.5	33.1	-3.5
F,2	39.4	34.1	-5.3
G,1	42.5	34.0	-8.5



DENVER INTERNATIONAL AIRPORT

Noise Office
8500 Peña Boulevard
AOB, 6th Level, NW Corner
Denver, CO 80249-6340

Phone: 303.342.2000
Noise Hotline: 303.342.2380
Toll Free Noise Hotline: 800.417.2988
Fax: 303.342.2366
E-mail: Noise.Office@flydenver.com

We're on the Web!

www.flydenver.com